

KRENN

We specialize in steel cutting

PRODUCT CATALOGUE



THE MOST VERSATILE
**STEEL CUTTER
RANGE**

ALL PRODUCTS AT: WWW.KRENN.DE



KRENN
We specialize in steel cutting

DEAR CUSTOMERS, DEAR INTERESTED PARTIES,

We are entering our 75th anniversary year with the most versatile range of steelcutters: **75 years of KRENN!**

In our new main catalogue you will find a large number of innovations and developments, alongside the trusted classics that have kept our customers coming back for decades now.

With a fresh layout and new logo, we are underlining our dynamic development to become the most versatile provider of steel cutters. Our product overview is now even clearer, which means you can find the right cutting device straight away.

As a leading specialist in steel cutting, we have the right tool for nearly every cutting task. Our high quality standards guarantee you robust, tried and tested, durable devices and machinery to cut steel – as well as for straightening, bending and upset testing wire samples.

Our steel cutting products are present in 70 countries and have proven themselves in tough usage, both in the construction and wire production and processing industries.

KRENN is a family-owned company with 75 years of tradition and great loyalty to its hometown of Neusäß in Bavaria, Germany. Our close collaboration with our customers helps us stand out from the crowd. This makes it possible for us to fulfil individual requirements and develop new devices for special applications.

Our company is characterised by a high level of consulting expertise, comprehensive service beyond the purchase, professional maintenance, and repairs that give our devices a long life as well as the best supply of spare parts.

You can put your trust in us. Our unique expert knowledge has been built up continuously over decades – from spring manufacturer to a leading specialist in steel cutting devices.

We look forward to hearing from you.



A handwritten signature in black ink, appearing to read 'Albert Krenn'.

Albert Krenn
Managing director



A handwritten signature in black ink, appearing to read 'Markus Krenn'.

Markus Krenn
Managing director

THE COMPANY

YOUR SPECIALIST IN CUTTING STEEL, FOR 75 YEARS

KRENN has its headquarters in the town of Neusäß, near Augsburg in Bavaria, Germany. It is a medium-sized company with a tradition that goes back more than 75 years. Founded in 1947 for the production of technical springs, KRENN has positioned itself on the European and global markets as a versatile provider of steel cutting devices. We stand for high-quality, user-oriented cutting devices for the safe, effortless and economical cutting and separating of steel.

At KRENN we can look back on over 75 years experience in the tools sector. We want to use these strengths to your benefit at all times. As a specialist with outstanding knowledge of the sector, we constantly deploy our specialist expertise to develop innovative, safe, user-friendly wire and steel cutters, wire rope cutters and many other professional tools of impressively high quality. As an expert team with sector-specific know-how, we continuously work on developing new products that meet your requirements.

Cutting and separating steel is our speciality – and has been for over 75 years. As a family company with a long tradition in the tools sector, we greatly value close collaboration with our customers. For that reason, we develop and produce innovative and economical cutting solutions to meet the most diverse challenges.

THE COMPANY



WE CUT STEEL

WE HAVE THE MOST VERSATILE RANGE OF STEEL CUTTERS.

WE ARE A **FAMILY COMPANY** WITH A TRADITION GOING BACK MORE THAN 75 YEARS.

WE SOLVE YOUR CUTTING CHALLENGES ON-SITE.

WE DEVELOP **INNOVATIVE CUTTING SOLUTIONS**.



Global professionals at cutting steel

In Germany and abroad, KRENN offers you manual, pneumatic, hydraulic and electro-hydraulic devices, both mains and battery powered, for specialist trades, the construction industry and wire producers and processors. Besides this, our versatile product range includes special devices to cut chains, wire ropes and cables.



THE MOST VERSATILE
STEEL CUTTER
RANGE

ALL PRODUCTS AT: WWW.KRENN.DE



A LEADING SPECIALIST IN **STEEL CUTTING**

KRENN is the specialist where user-oriented solutions are required in the field of steel cutting, straightening, bending and testing. Our 75 years' experience on the market and outstanding expertise in handling the specific requirements of our customers make us a global leader and specialist with over 3,000 satisfied customers in 70 countries. Every sector faces new challenges every day – and at KRENN, we offer you the world's widest range of high-quality, safe and efficient cutting devices that live up to your individual requirements. Benefit from our expert knowledge of sector-specific solutions.

CONSTRUCTION



In the construction industry, durable, safe and powerful tools are vital. Whether it is on-site or at a concrete pre-casting plant: with our robust and reliable steel cutters specially designed for the construction industry, we offer the right tool for every application.

WIRE PRODUCTION INDUSTRY



Whether it's tried-and-tested favourites or individually produced special products: for the wire producing industry, at KRENN we offer a wide range of tailor-made cutting solutions that you can integrate easily and seamlessly into your existing processes. Leading wire rolling mills and wire drawing shops as well as well-known manufacturers of reinforcing steel bars and meshes worldwide have been relying on our robust and durable equipment and our expert knowledge for decades.

WIRE PROCESSING INDUSTRY



KRENN steel cutters are tailor-made for the demands of wire processing companies and are impressive with their safety, efficiency and ergonomics thanks to our 75 years of experience and specific knowledge of the sector. We supply wire processing companies, alongside screw, bolt, spring and wire mesh manufacturers with our high-quality products.

SPECIALIST TRADES



Whether it is proven models for uncomplicated and efficient everyday work on the construction site and at factory or special tools: all our KRENN products stand out due to our extensive, professional experience in the tools sector. Offer your customers precise, robust and highly functional tools for steel cutting, straightening and bending.

INDUSTRY



We are your reliable partner when it comes to steel cutting. With our innovative devices, we can handle even difficult cutting tasks. Whether for opening packaging strapping on freight, cutting spring steel, steel-reinforced cables or high-tensile wires, chains and wire ropes: with our individual consultation, we can find the right device for every cutting task.



KRENN



1 9 4 7 - 2 0 2 2

75 YEARS OF KRENN

From a spring manufacturer to a
specialist in steel cutting

HISTORY

A white starburst graphic with multiple points, set against a blue background.

2022

KRENN celebrates its 75th anniversary.

In 75 years, we have developed into the leading specialist for steel cutting devices in the wire-producing and processing industry and construction, now supplying our products in over 70 countries.



FOUNDED IN 1947

The company was founded by Albert Krenn Sr. in Augsburg to product technical springs. He was supported by his wife Centa.



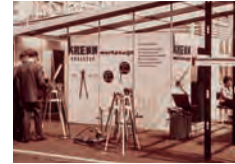
1949

Start of production of manual bolt cutters with replaceable triangular blades. Sold via specialist dealers.



1957

Move to the new-built premises in Neusäß, Augsburg.



1965

Introduction of the hydraulic steel cutter. World premiere at the Hanover Fair.



1988

KRENN presents for the first time at "wire" in Düsseldorf.



1986

Introduction of the electro-hydraulic steel cutter. Increased sales to the wire industry.



1984

Introduction of the pneumatic steel cutter developed in-house by KRENN.



1975

Company taken over by Albert Krenn Jr., full focus on cutting tools.



1992

Introduction of the hydraulic cordless steel cutter, the first of its kind in Europe.



1997

KRENN celebrates its 50th anniversary.



2000

Further development of the division for custom-made tools.



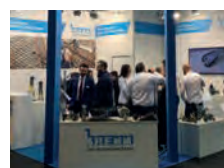
2015

Takeover of the "steel cutters, straighteners and test presses" division of the company KAMAX.



2019

Further development of hydraulic test presses – new test machine is delivered to the world's leading steel manufacturer.



2017

KRENN celebrates its 70th anniversary.



2016

Setting a course for the future. The third generation comes on board: Markus Krenn becomes a partner and managing director.

CONTENTS

PRODUCT OVERVIEW

PRODUCT GROUP 01



PAGE
12-31

MANUAL STEEL CUTTER

Mesh and bolt cutters	15-25
Steel strapping cutters	26-27
Threaded rod cutters	28
Wire rope and cable cutters	29-30
Cutting and bending devices	31

PRODUCT GROUP 02



PAGE
32-63

STEEL CUTTING AND BENDING DEVICES

Battery-powered hydraulic steel cutters	34-36
Electro-hydraulic steel cutters	37-43
Battery-powered flush steel saws	44
Electro-hydraulic chain cutters	45
Electro-hydraulic bending devices	46-47
Pneumatic steel cutters / steel strapping cutters	48-61
Electro-mechanical rebar cutter	62-63

PRODUCT GROUP 03



PAGE
64-71

HYDRAULIC DEVICES AND DRIVE UNITS

Hydraulic straighteners	66-67
Hydraulic steel cutters	68-70
Hydraulic drive units	71

PRODUCT GROUP 04



PAGE
72-85

KX - HYDRAULIC STEEL CUTTERS AND STRAIGHTENERS HYDRAULIC MATERIAL TESTING PRESSES

KX - Hydraulic steel cutters	74-77
KX - Hydraulic straighteners	78-79
KX - Hydraulic drive units /accessories	80-83
KX - Hydraulic material testing presses	84-85

PRODUCT GROUP 05



PAGE
86-91

HYDRAULIC CABLE AND WIRE CUTTERS

Electro-hydraulic wire rope and cable cutters	88-89
Hydraulic cable cutters	90-91

PRODUCT GROUP 06



PAGE
92-95

ACCESSORIES

Operation via foot pedal	94
Assembly on the work bench	94
Mobile device rests	94
Suspension systems	95
Suspension ring	95

KRENN

PRODUCT GROUP 01
HIGHLIGHT

SERIES K
WITH THREE-EDGED
EXCHANGEABLE BLADE



MANUAL STEEL CUTTER



Scan now to go
straight to the
products

With our robust and durable special manual tools to cut steel bars, steel straps, threaded rods, cables and wires, we ensure you can work efficiently and with minimum fatigue. KRENN has the right manual steel cutter at the ready for every area of application: at KRENN, you can find an innovative range of special tools to cut round materials and steel bars such as reinforcement mesh, rebar, wire and bolts.



Mesh and bolt cutters



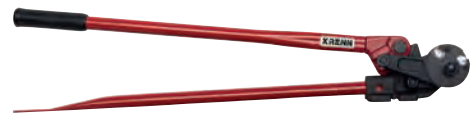
Page 15-25

Steel strapping cutters



Page 26-27

Threaded rod cutters



Page 28

Wire rope and cable cutters



Page 29-30

Cutting and bending devices



Page 31

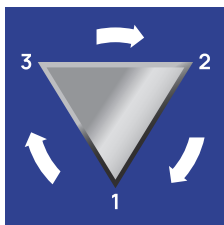
KRENN

YOUR ADVANTAGES WITH MANUAL STEEL CUTTERS K/KM/RI SERIES



ADVANTAGES FOR YOU WITH OUR REPLACEABLE THREE-EDGED BLADES

- Chrome-vanadium special high-performance blades: low wear, long life
- Cutting performance to HRC 48 or HRC 52
- Easy and rapid blade changes
- Considerably cheaper than comparable cutter heads
- No blade readjustment needed
- Low warehousing costs: one blade design for all KRENN models
- Think green: low steel consumption



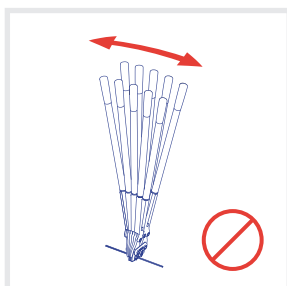
1 BLADE - 3 CUTTING EDGES

Replaceable KRENN blades have three cutting edges. If a cutting edge is damaged or worn, simply rotate it.

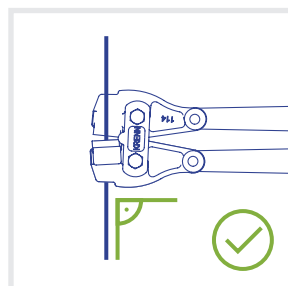
YOUR ADVANTAGES WITH OUR KRENN STEEL CUTTERS

- Very robust cutter jaws made of special steel, drop-forged, with high-quality tempering
- Very sturdy drop-forged pair of precision joints in special steel, high-quality tempering
- Long service life thanks to high-quality, tempered joint bolts
- Outstanding handling because of optimum weight distribution

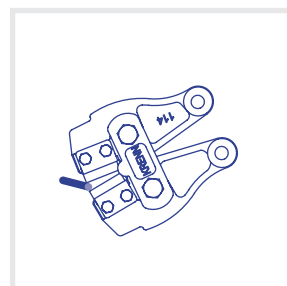
NOTES ON USE



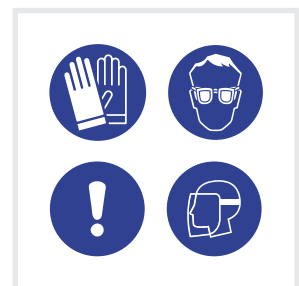
Do not twist when cutting.



Always apply steel cutters at a right angle



Do not cut with the tip



Not for cutting electrical leads.

TIP: cut into thick material first, than reset the bolt cutter and only then cut all the way through

Mesh Cutter Series KM

Premium tool for professional users - with three-edged exchangeable blades. Powerful and durable - for cutting reinforcing steel meshes.



Details

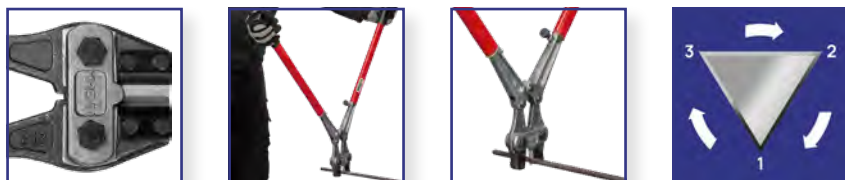
- light and strong
- excellent handling due to optimal weight distribution
- very stable drop-forged precision hinged joints
- replacement part: three-edged exchangeable blade no. 4, art.-no. 00040



MODEL	ART-NO.	LENGTH	WEIGHT	CUTTING CAPACITY MAX. FOR CUTTING REINFORCING STEEL MESHES		
				HRC 19/SINGLE 760 N/mm ²	HRC 19/DOUBLE 760 N/mm ²	HRC 40/SINGLE 1.250 N/mm ²
KM8	AA000	800 mm/32"	3.4 kg	11 mm	2 x 8 mm	8 mm
KM10	AA010	900 mm/35"	3.75 kg	11 mm	2 x 8 mm	9 mm
KM10 L	AA020	1000 mm/40"	3.4 kg	11 mm	2 x 8 mm	9 mm

Bolt Cutter Series K

Premium tool for professional users - with three-edged exchangeable blades. Strong and durable - for both soft and hard steel.



Details

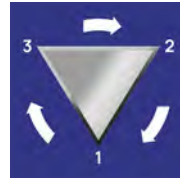
- light and handy because of slim cutter head and oval tubes with handles
- long service life as a result of high-quality, hinge joint bolts
- replacement part: three-edged exchangeable blade no. 4, art.-no. 00040



MODEL	ART-NO.	LENGTH	WEIGHT	CUTTING CAPACITY MAX. FOR ROUND STEEL		
				HRC 19/SINGLE 760 N/mm ²	HRC 36/SINGLE 1.200 N/mm ²	HRC 48/SINGLE 1.600 N/mm ²
K6	BA410	630 mm/25"	3 kg	9 mm	8 mm	6.5 mm
K8	BA420	700 mm/28"	3.35 kg	10 mm	8 mm	7 mm
K8 L	BA430	900 mm/35"	3 kg	10 mm	8 mm	7 mm

Bolt Cutter Series K

Premium tool for professional users - with three-edged exchangeable blades. Strong and durable - for both soft and hard steel.



Details

- high degree of stability and cutting force
- very sturdy cutter head and pair of joints made of special steel drop-forged and high-grade tempered
- replacement part: three-edged exchangeable blade no. 4, art.-no. 00040

MODEL	ART-NO.	LENGTH	WEIGHT	CUTTING CAPACITY MAX. FOR ROUND MATERIAL		
				HRC 19/SINGLE 760 N/mm ²	HRC 36/SINGLE 1.200 N/mm ²	HRC 48/SINGLE 1.600 N/mm ²
K10	BA010	800 mm/32"	5.95 kg	11 mm	9 mm	8 mm
K12	BA020	900mm/35"	6.25 kg	13 mm	10 mm	9 mm
K14	BA030	1100 mm/43"	7 kg	15 mm	11 mm	10 mm
K16	BA040	1250 mm/49"	10 kg	16 mm	12 mm	10 mm

K16 with foot support for ergonomic cutting on the ground

Three-edged exchangeable blade No. 4

Chrome-Special, hardness: HRC 57 - 2.200 N/mm². K6 - K16, KM8 - KM10L, SB-Model.



Details

1 Blade - 3 Cutting edges

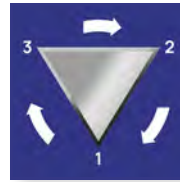
exchangeable blade with 3 cutting edges. If a cutting edge is damaged or worn, simply turn the blade.



ART-NO.	WEIGHT	PACKAGE CONTENTS
00040	0.03 kg	1 piece
00041	0.07 kg	2 pieces
00042	0.32 kg	10 pieces
00043	0.64 kg	20 pieces

Mesh Cutter KM10 SB

Premium tool for professional users – with three-edged exchangeable blades. Strong and durable – for cutting reinforcing steel meshes.



Details

- light and strong
- excellent handling due to optimal weight distribution
- very stable, drop-forged precision hinged joints
- long service life as a result of high-quality joint bolts
- replacement part: three-edged exchangeable blade no. 4, art.-no. 00040

MODEL	ART-NO.	LENGTH	WEIGHT	CUTTING CAPACITY MAX. FOR CUTTING REINFORCING STEEL MESHES		
				HRC 19/SINGLE 760 N/mm ²	HRC 19/DOUBLE 760 N/mm ²	HRC 40/SINGLE 1.250 N/mm ²
KM10 SB	AA012	950 mm/37"	3.9 kg	11 mm	2 x 8 mm	9 mm

Minimum quantity upon request

Bolt Cutter K SB

Premium tool for professional users - with three-edged exchangeable blades. Strong and durable - for both soft and hard steel.



Details

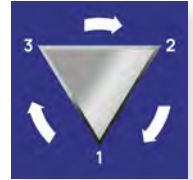
- high degree of stability and cutting force
- very strong cutter head and pair of joints made from drop-forged special steel
- replacement part: three-edged exchangeable blade no. 4, art.-no. 00040

MODEL	ART-NO.	LENGTH	WEIGHT	CUTTING CAPACITY MAX. FOR ROUND MATERIAL		
				HRC 19/SINGLE 760 N/mm ²	HRC 36/SINGLE 1.200 N/mm ²	HRC 40/SINGLE 1.250 N/mm ²
K10 SB	BA015	800 mm/32"	5.95 kg	11 mm	9 mm	8 mm
K12 SB	BA022	950 mm/37"	6.4 kg	13 mm	10 mm	9 mm

Minimum quantity upon request

Bolt Cutter Series RI - for the wire industry

Premium tool for professional users - with three-edged exchangeable blades. Strong and durable - for high-tensile steel.



MODEL	ART-NO.	LENGTH	WEIGHT	CUTTING CAPACITY MAX. FOR ROUND MATERIAL		
				HRC 36/SINGLE 1.200 N/mm ²	HRC 48/SINGLE 1.600 N/mm ²	HRC 52/SINGLE 1.800 N/mm ²
RI06	BA190	630 mm/25"	3.1 kg	8 mm	6.5 mm	4 mm
RI08	BA200	700 mm/28"	3.4 kg	8 mm	7 mm	5 mm
RI08 L	BA431	900 mm/28"	3.7 kg	8 mm	7 mm	5 mm

Bolt Cutter Series RI - for the wire industry

Premium tool for professional users - with three-edged exchangeable blades. Strong and durable - for high-tensile steel.



Details

- blade No. 4 Extra, blade hardness HRC 62
- reinforced blade holder
- very sturdy drop-forged pair of joints made of drop-forged special steel
- high degree of stability and cutting force
- replacement part: three-edged exchangeable blade no. 4, art.-no. 00050



MODEL	ART-NO.	LENGTH	WEIGHT	CUTTING CAPACITY MAX. FOR ROUND MATERIAL		
				HRC 36/SINGLE 1.200 N/mm ²	HRC 48/SINGLE 1.600 N/mm ²	HRC 52/SINGLE 1.800 N/mm ²
RI10	BA210	800 mm/32"	5.5 k	9 mm	8 mm	6 mm
RI12	BA220	900 mm/35"	6.1 kg	10 mm	9 mm	8 mm
RIS12	BA320	900 mm/35"	7.3 kg	10 mm	9 mm	8 mm
RI14	BA230	1100 mm/43"	7.4 kg	11 mm	10 mm	9 mm
RI16	BA240	1250 mm/49"	10.4 kg	12 mm	10 mm	10 mm
RIS16	BA340	1250 mm/49"	11.6 kg	12 mm	10 mm	10 mm

Three-edged exchangeable blade No. 4 Extra

ART-NO.	WEIGHT	PACKAGE CONTENTS
00050	3 cutting-edges	1 piece
00051	3 cutting-edges	2 pieces
00052	3 cutting-edges	10 pieces

Details

- 1 Blade - 3 Cutting edges
- Special steel, Hardness: HRC 62 - 2.300 N/mm²



Mesh Cutter MASTERTOOL Series BKM S

Premium tool for professional users – with exchangeable cutter head.
Light and sturdy – for cutting reinforcing steel meshes.



Details

- Series BKM S with stable KRENN joint
- sturdy, exchangeable cutter head made of drop-forged special steel
- simple, stepless adjustment of the blades via eccentric screw
- very stable, drop-forged precision joint pair
- long service life as a result of high-quality, ground joint bolts
- low weight
- replacement part: replacement head MASTERTOOL BKM, art.-no. X0400

MODEL	ART-NO.	LENGTH	WEIGHT	CUTTING CAPACITY MAX. FOR CUTTING REINFORCING STEEL MESHES		
				HRC 19/SINGLE 760 N/mm ²	HRC 19/DOUBLE 760 N/mm ²	HRC 36/SINGLE 1.200 N/mm ²
BKM800 S	AA110	800 mm/32"	3 kg	9 mm	2 x 6.5 mm	8 mm
BKM900 S	AA120	900 mm/35"	3.6 kg	11 mm	2 x 8 mm	9 mm
BKM950 S	AA125	950 mm/37"	3.7 kg	11 mm	2 x 8 mm	9 mm
BKM1000 S	AA130	1000 mm/40"	3.8 kg	11 mm	2 x 8 mm	10 mm

Mat Cutter MATERTOOL BKM900

For the professional users – with exchangeable cutter head.
Light and easy to handle – for cutting reinforcing steel meshes.



Details

- small, narrow cutter head with adjustable blades
- single gripping of welded wire mesh due to the long upper blade
- the small and narrow cutter head enables close cutting to the welding points of wire meshes
- replacement part: replacement head MASTERTOOL BKM, art.-no. A0300

MODEL	ART-NO.	LENGTH	WEIGHT (KG)	CUTTING CAPACITY MAX. FOR CUTTING REINFORCING STEEL MESHES		
				HRC 19/SINGLE 760 N/mm ²	HRC 19/DOUBLE 760 N/mm ²	HRC 36/SINGLE 1.200 N/mm ²
BKM900	AA100	900 mm/35"	3.4 kg	9 mm	2 x 8 mm	8 mm

Mesh Cutter MASTERTOOL Series SKM

For the professional users - with exchangeable cutter head.
Light and easy to handle - for cutting reinforcing steel meshes.



Details

- small, narrow cutter head with adjustable blades
- single gripping of welded wire mesh due to the long upper blade
- the small and narrow cutter head enables close cutting to the welding points of wire meshes
- replacement part: replacement head MASTERTOOL SKM, art.-no. A0350

MODEL	ART-NO.	LENGTH	WEIGHT	CUTTING CAPACITY MAX. FOR CUTTING REINFORCING STEEL MESHES		
				HRC 19/SINGLE 760 N/mm ²	HRC 19/DOUBLE 760 N/mm ²	HRC 36/SINGLE 1.200 N/mm ²
SKM800	AA150	800 mm/32"	3.5 kg	9 mm	2 x 8 mm	8 mm
SKM1000	AA155	1000 mm/40"	4.05 kg	11 mm	2 x 8 mm	10 mm

Replacement Head MASTERTOOL BKM

ART-NO.	FOR MODEL
X0400	BKM800S/900S/950S/1000S
A0350	SKM800/1000



Vicente Madrid

Sales Manager Industrial Equipment and Tools –
Contact person in the field of steel cutting and bending equipment

THE SPECIAL KRENN SERVICE Personal advice is a top priority at KRENN!

Our goal is to select the optimum cutting device for your requirements – or to develop it from scratch. Because only then is maximum safety, ergonomic working and cost-effectiveness guaranteed.

Let our cutting experts advise you – on site or by phone. We will also be happy to work with you to develop cutting solutions tailored to your needs by equipping KRENN machines with the right accessories or adapting and further developing them for you.

Call us, our consultants are there for you!

For a telephone consultation you can reach me at
+49 (0) 821 20793-18
vicente.madrid@krenn.de

Bolt Cutter MASTERTOOL ARM Series

The top all-rounder for professional users - with exchangeable cutter head. Powerful and reliable - for both soft to hard steel.



Details

- very sturdy, exchangeable cutter head made of special steel, drop-forged and high-grade tempered
- very stable, drop-forged pair of joints
- high cutting force - low weight

MODEL	ART-NO.	LENGTH	WEIGHT	CUTTING CAPACITY MAX. FOR ROUND MATERIAL		
				HRC 19/SINGLE 760 N/mm ²	HRC 36/SINGLE 1.200 N/mm ²	HRC 48/SINGLE 1.600 N/mm ²
ARM300	BA110	315 mm/12"	0.7 kg	5.5 mm	5 mm	4 mm
ARM450	BA120	470 mm/19"	1.5 kg	7 mm	6 mm	5 mm
ARM600	BA130	620 mm/25"	2.6 kg	9 mm	8 mm	7 mm
ARM750	BA140	770 mm/30"	3.9 kg	11 mm	9 mm	8 mm
ARM900	BA150	930 mm/37"	5.9 kg	13 mm	11 mm	9 mm
ARM1050	BA160	1050 mm/52"	8.6 kg	15 mm	11 mm	10 mm

Bolt Cutter MASTERTOOL ARM600 SB

The top all-rounder for professional users - with exchangeable cutter head. Powerful and reliable - for both soft to hard steel.



Details

- very sturdy, exchange cutter head made of special steel, drop-forged and high-quality tempered
- very stable, drop-forged pair of joints
- high cutting force - low weight
- replacement part: replacement head MASTERTOOL ARM, art.-no. A0420

MODEL	ART-NO.	LENGTH	WEIGHT (KG)	SPECIAL FEATURE	CUTTING CAPACITY MAX. FOR ROUND MATERIAL		
					HRC 19/SINGLE 760 N/mm ²	HRC 36/SINGLE 1.200 N/mm ²	HRC 48/SINGLE 1.600 N/mm ²
ARM600 SB	BA170	540 mm/21"	5 kg	with mounting plate for assembling at the worktable	9 mm	8 mm	7 mm
ARM600 SB	BA175	540 mm/21"	5 kg	without mounting plate	9 mm	8 mm	7 mm

Bolt Cutter MASTERTOOL ARM250

The top all-rounder for professional users - with an opening spring. Easy to handle and powerful - for both soft to hard steel.



Details

- high degree of stability and cutting force
- very sturdy cutter head, drop forged
- stable and durable cutting edges, induction hardened (hardness HRC 59)
- light and handy: compact dimensions, only 320 g light
- ergonomically shaped, sturdy grip made of powder-coated steel: gentle pressure distribution through large contact surface
- flush cutting, due to clipper cut design

MODEL	ART-NO.	LENGTH	WEIGHT (KG)	CUTTING CAPACITY MAX. FOR ROUND MATERIAL			
				220 N/MM ²	HRC 19/SINGLE 760 N/mm ²	HRC 36/SINGLE 1.200 N/mm ²	HRC 36/SINGLE 1.200 N/mm ²
ARM250	BA100	230 mm/9"	0.32 kg	5 mm	4 mm	3.5 mm	3 mm

Replacement Head MASTERTOOL ARM

ART-NO.	FOR MODEL
A0400	ARM300
A0410	ARM450
A0420	ARM600/600 SB
A0430	ARM750
A0440	ARM900
A0450	ARM1050

Bolt Cutter EUROTOOL Series CBK

The alternative for professional users - with an exchangeable cutter head.
Light and easy to handle - for soft to medium-hard steel.

Details

- with adjustable cutter head
- low weight



MODEL	ART-NO.	LENGTH	WEIGHT	CUTTING CAPACITY MAX. FOR ROUND MATERIAL	
				HRC 19/SINGLE 760 N/mm ²	HRC 36/SINGLE 1.200 N/mm ²
CBK200	BA500	230 mm/9"		4 mm	3.5 mm
CBK300	BA510	310 mm/12"	0.8 kg	5.5 mm	5 mm
CBK450	BA520	450 mm/19"	1.5 kg	7 mm	6 mm
CBK600	BA530	615 mm/25"	2.3 kg	9 mm	8 mm
CBK750	BA540	770 mm/30"	3.7 kg	11 mm	9 mm
CBK930	BA550	920 mm/37"	5.45 kg	13 mm	10 mm

Replacement Head EUROTOOL CBK

ART-NO.	FOR MODEL
A0700	CBK300
A0710	CBK450
A0720	CBK600
A0730	CBK750
A0740	CBK930

Replacement parts for Steel Cutters



Blade bar pair X0100



Stop Screw X0190



Joint Bolt K X0170

ART-NO.	FOR BRAND	DESCRIPTION	SPECIAL FEATURE
A0000	KM8/10	Mesh Cutter Head	—
A0110	K10/12	Replacement Head K	—
A0120	K14/16	Replacement Head K	—
A0500	K5/6/8/8L	Replacement Head K	—
X0310	KM upper jaw-104	Cutting Jaw KM	—
X0330	KM lower jaw-105	Cutting Jaw KM	—
X0340	K5/6/8	Cutting Jaw K	—
X0360	K10/12	Cutting Jaw K	—
X0370	K14/16	Cutting Jaw K	—
B0000	KM8	Hinge joints with handle K 404/405 404/405	—
B0010	KM10/8L	Hinge joints with handle K 404/405	—
B0020	KM10L	Hinge joints with handle K 404/405	—
B0160	K6	Hinge joints with handle K 404/405	—
B0100	K8	Hinge joints with handle K 404/405	—
B0110	K10	Hinge joints with handle K 400/401 400/401	—
B0120	K12	Hinge joints with handle K 400/401 400/401	—
B0130	K14	Hinge joints with handle K 400/401	—
B0140	K16	Hinge joints with handle K 400/401 400/401	—
X0100		blade holder (pair)	—
X0190	404/405-125	Stop Screw	—
X0120	KM129	Clamp screw KM	—
00400	K5/6/8/8L	Roller K	—
00410	K10/12/14/16	Roller K	—
X0140	KM/K6/K8/K8L S	Strap bolt K	—
X0150	K10/12	Strap bolt K	—
X0160	K14/16	Strap bolt K	—
00300	K5-K12	Strap for K14/16-261	—
00310	K14/16-261	Strap for K14/16-261	—
X0170	KM/K6/K8/K8L S/BKM S	Joint Bolt K	—
X0180	K10/12/14/16-302	Joint Bolt K	—
70040	—	Screw	DIN 933, M6x25-419
70540	—	Nut	DIN 934, M6-421
70041	—	Screw	DIN 931, M6x40-501
70570	—	Nut	M12-250
71000	801	Tooth washer	—
71200	302/303-812	Locking rings	—
C0000	K14/16 und R14/16	Foot support	—

Sales stands

The optimal sales support – the sales stand is manufactured in a sturdy and stable construction and thus reflects the premium quality of our tools. With the KRENN sales stand, we offer you a high-quality and durable sales stand perfectly supporting your sale of our KRENN steel cutters.



Details

- high-quality model made from powder-coated steel tubes
- with A4 brochure rack
- with scanner strips
- without equipment, please order KRENN bolt and mesh cutter separately

WEIGHT	31 kg
COLOUR	blue
SPECIAL FEATURE	with brochure rack and scanner strips
DIMENSIONS (B X T X H)	890x500x1500 mm
CAPACITY	for max. 32 Mesh and Bolt Cutters
MATERIAL	Powder-coated steel tube
ART-NO.	Y0081

Sales display

High-quality sales display made of powder-coated sheet steel including product flyer for the optimal presentation of the KRENN compact bolt cutter ARM 250.



Details

- high-quality model made of powder-coated sheet steel
- suitable for sales counters and for mounting on perforated panel walls
- with DIN-length product flyers „ARM 250“
- with scanner strips
- without equipment, please order compact bolt cutter ARM 250 separately

WEIGHT	1.6 kg
COLOUR	blue
SPECIAL FEATURE	with brochure rack and scanner strips
DIMENSIONS (B X T X H)	270x145x320 mm
CAPACITY	for 10x ARM 250
MATERIAL	Powder-coated sheet steel
ART-NO.	Y0082

Steel Strapping Cutter KBB-260

Safety function: steel strapping is clamped when cutting; This prevents the ends of the steel strapping from bouncing up.



Details

- minimal effort needed due to leverage
- Pointed leading edge can easily get under the tensioned steel strapping
- integrated steel spring automatically opens the cutter when loosening the grip
- ergonomically formed handle, plastic-coated with slip protection
- with safety function

TOTAL LENGTH	260 mm
WEIGHT	0.6 kg
FOR STEEL STRAPPINGS	Strap width up to 25 mm, strap thickness up to 0.6 mm
MODEL	KBB260
ART-NO.	BA650

Steel Strapping Cutter KHB-200



Details

- extremely light and handy steel strapping cutter
- effort-saving cutting of the strapping of pallets or freight
- with safety retention

TOTAL LENGTH	240 mm
WEIGHT	0.3 kg
FOR STEEL STRAPPINGS	Strap width up to 32 mm, strap thickness up to 0.9 mm
MODEL	KHB200
ART-NO.	BA700

Steel Strapping Cutter KHB-450



Details

- extremely light and handy steel strapping cutter
- effort-saving cutting of the strapping of pallets or freight
- for two-hand operation, for cutting with a large safety distance
- with safety retention

MODEL	ART-NO.	TOTAL LENGTH	WEIGHT	FOR STEEL STRAPPINGS
KHB450 460	BA710	460 mm	1.4 kg	Strap width up to 51 mm, strap thickness up to 1.2 mm
KHB450 550	BA755	550 mm	1.8 kg	Strap width up to 51 mm, strap thickness up to 1.2 mm
KHB450 800	BA780	800 mm	2.2 kg	Strap width up to 51 mm, strap thickness up to 1.2 mm

Steel Strapping Cutter KHB-600



Details

- extremely light and handy steel strapping cutter
- effort-saving cutting of the strapping of pallets or freight
- for two-hand operation, for cutting with a large safety distance

TOTAL LENGTH	600 mm
WEIGHT	2.7 kg
FOR STEEL STRAPPINGS	Strap width up to 51 mm, strap thickness up to 1.3 mm or 32 mm x 1.2 mm with double steel straps
MODEL	KHB600
ART-NO.	BA720

Steel Strapping Cutter KSB-600

Suitable for steel strappings with a strapping width up to 50 mm and thickness up to 1.2 mm. Safety function: steel strapping is clamped when cutting; This prevents the ends of the steel strapping from bouncing up.



Details

- extremely sturdy steel strapping cutter, consisting of a high-quality steel alloy
- central guidance of the upper cutting edge
- the individual parts are connected by spring pins, cutting edges can be removed for sharpening
- with safety function

TOTAL LENGTH	600 mm
WEIGHT	2.6 kg
MODEL	KSB600
ART-NO.	BA611

Threaded Rod cutter KHG-740



Details

- convenient cutting to length or separation of threaded rods M6/M8/M10 without burrs, swarf and noise pollution
- no reworking of the thread
- essential in electrical installation, in air conditioning, ventilation and heating construction
- Cutting blade exchangeable
- Replaceable cutting blade

MODEL	ART-NO.	LENGTH	WEIGHT	SPECIAL FEATURE
KHG740	HA100	740 mm	4.1 kg	without blade
KHG740	HA101	740 mm	4.1 kg	including blade M8 and M10

Blade threaded Rod KHG

ART-NO.	FOR BRAND	WEIGHT
X0260	KHG	TYPE M6
X0261	KHG	TYPE M8
X0262	KHG	TYPE M10

Wire rope Cutter MASTERTOOL series ARM RC

Professional wire rope cutter - with replaceable cutter head.
Strong and sturdy - for cutting wire ropes.



MODEL	ART-NO.	LENGTH	WEIGHT	CUTTING CAPACITY MAX. FOR WIRE ROPE
ARC8	EA000	195 mm	0.3 kg	5 mm
ARC450	EA010	450 mm	1.5 kg	12 mm
ARC800	EA020	800 mm	3.9 kg	16 mm

Details

- cuts high-tensile wire rope without fraying
- replaceable cutter head made of special steel, drop-forged and high-grade tempered
- replacement parts: replacement heads MASTERTOOL ARM, art.-no. A0465 and A0470

Wire rope Cutter MASTERTOOL series ARM WR

Professional wire rope cutter - with replaceable cutter head.
Strong and sturdy - for cutting wire ropes.



MODEL	ART-NO.	LENGTH	WEIGHT	CUTTING CAPACITY MAX. FOR WIRE ROPE
AWR10	EA050	590 mm	2.3 kg	10 mm
AWR14	EA060	750 mm	3.6 kg	14 mm
AWR16	EA070	900 mm	5.3 kg	16 mm
AWR20	EA080	1066 mm	8.2 kg	20 mm

Details

- cuts high-tensile wire rope without fraying
- very sturdy replaceable cutter head made of special steel, drop-forged and high-grade tempered
- replacement parts: replacement heads MASTERTOOL AWR, art.-no. A0480, A0484, A0486 und A0488

Wire rope Cutter MASTERTOOL ARM WR-10 BB

Professional wire rope cutter - with replaceable cutter head.
Strong and sturdy - for cutting wire ropes.



Details

- cuts high-tensile wire rope without fraying
- very sturdy replaceable cutter head made of special steel, drop-forged and high-grade tempered
- replacement part: replacement head MASTERTOOLARM, art.-no. A0480

MODEL	ART-NO.	LENGTH	WEIGHT	SPECIAL FEATURE	CUTTING CAPACITY MAX. FOR WIRE ROPE
AWR10 BB	EA200	1066 mm	5 kg	with mounting plate	10 mm

Cable Cutter MASTERTOOL series ARM KC

Professional cable cutter - with exchange cutter head.
Powerful and handy - for cutting copper cables.



Details

- cuts copper and aluminum cables
- exchange cutter head made of special steel, drop-forged and high-grade tempered
- replacement parts: replacement heads MASTERTOOLAKC, art.-no. A0492 und A0494

MODEL	ART-NO.	TOTAL LENGTH	WEIGHT	CUTTING CAPACITY MAX. WITH COPPER CABLE
AKC450	EA345	450 mm	1.4 kg	25 mm
AKC800	EA380	800 mm	3.6 kg	50 mm

Replacement Head MASTERTOOL ARC/AWE/AKC

ART-NO.	FOR MODEL	DESCRIPTION
A0465	ARC450	Replacement Head MASTERTOOLARC
A0470	ARC800	Replacement Head MASTERTOOLARC
A0480	AWR10/10BB	Replacement Head MASTERTOOLAWR
A0484	AWR14	Replacement Head MASTERTOOLAWR
A0486	AWR16	Replacement Head MASTERTOOLAWR
A0488	AWR20	Replacement Head MASTERTOOLAWR
A0492	AKC450	Replacement Head MATERTOOLAKC
A0494	AKC800	Replacement Head MATERTOOLAKC



Replacement Head ARC



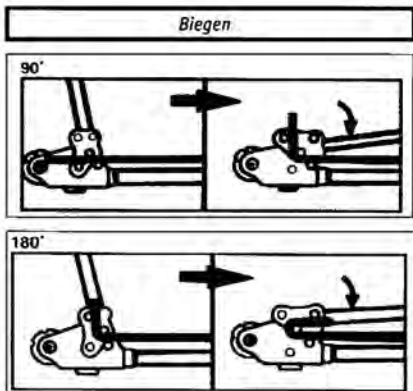
Replacement Head AKC

Cutting and Bending Tool Series KRC

For professional users - strong leverage. For cutting and bending reinforcing steel.

Details

- strong leverage for large diameters
- for manual cutting and bending of rebar and wire without changing tools
- special cutter head with double blades
- bending angle max. 180°
- with a floor plate for a secure stand for ergonomic cutting and bending



MODEL	ART-NO.	LENGTH	WEIGHT	SPECIAL FEATURE	CUTTING CAPACITY MAX. Ø (450 N/MM ²)
KRC13 BN	GA110	1070 mm	10,5 kg	Bending process: one to about 135°, two to 180°	12 mm
KRC16 BN	GA120	1320 mm	16 kg	Bending process: one to about 90°, two to 180°	16 mm

KRENN

PRODUCT GROUP 02
HIGHLIGHT

OS-13
ACNL/BATTERY



STEEL CUTTING AND BENDING DEVICES



Scan now to go
straight to the
products

You can find the most modern electro-hydraulic steel cutters with battery powered drive and mains connection, alongside pneumatic cutters in our range. Whether for the precise cutting of larger sections or tougher materials – our compact devices offer a highly economical solution for your company in all cases. Steel cutting and bending devices from KRENN are easy to operate and can be deployed rapidly and flexibly. Our high-quality cutting solutions guarantee the safe, spark-free cutting of steel bars, wires and rebar. We also offer you special devices to safely cut high-tensile wires, chains, prestressing wire and steel straps, as well as for bending wire and rebar.

Battery powered hydraulic
steel cutters



Page 34-36

Electro-hydraulic steel cutters



Page 37-43

Battery-powered flush steel saws



Page 44

Electro-hydraulic chain cutters



Page 45

Electro-hydraulic bending devices



Page 46-47

Pneumatic steel cutters/
steel strapping cutters



Page 48-61

Electro-mechanical rebar cutter



Page 62-63

Electro-hydraulic Battery Powered Steel Cutter OS-13 ACNL



Details

- with 2.5 sec. cutting time, fastest cordless bolt cutter up to 13 mm Ø
- lithium-ion battery
- cuts per battery charge - at 10 mm Ø approx. 250 cuts - at 13 mm Ø approx. 125 cuts
- light, handy, compact

CUTTING CAPACITY MAX. Ø	13 mm
CUTTING SPEED	2.5 s
WEIGHT	4.55 kg
VOLTAGE	18 V
BATTERY TYPE	Lithium-ion
CUTTING POWER	5,3 t
BATTERY CAPACITY	5 Ah
DIMENSIONS (L X B X H)	331 x 99 x 262 mm
MODEL	OS13 ACNL
ART-NO.	CE430
REPLACEM. BLADE	ART-NO. Z3005
REPL. BATTERY	ART-NO. Z1902

The extra-rapid model

High cutting speed - The fastest battery-powered hydraulic steel cutter up to 13 mm Ø on the market.

Electro-hydraulic Battery Powered Steel Cutter OS-16 ACBL

Particularly quick cuts, handy and strong design. The new electro-hydraulic steel cutter with extra-fast cutting capacity. Equipped with the latest brushless 18 volt motor and lithium-ion battery. cutter head can be rotated 360°.



Details

- safe and spark-free cutting
- brushless 18 volt motor - runs cooler and more efficiently for a longer service life of the motor and the battery
- no need to replace the carbon brushes
- fast and single cutting
- four-edged exchangeable blade - economical
- cutter head rotatable for an optimal cutting position
- adjustable stop
- ergonomic and rubberized pistol grip for safe and comfortable working

CUTTING CAPACITY MAX. Ø	16 mm
CUTTING SPEED	2.8 s
WEIGHT	6.9 kg
VOLTAGE	18 V
BATTERY TYPE	Lithium-ion
BATTERY VOLTAGE	18 V
CUTTING POWER	8 t
BATTERY CAPACITY	5 Ah
DIMENSIONS (L X B X H)	360 x 108 x 276 mm
MODEL	OS16 ACBL
ART-NO.	CE446
REPLACEM. BLADE	ART-NO. Z1777
REPL. BATTERY	ART-NO. Z1902

Particularly quick cuts

High battery performance: approx. 2.8 seconds/cut 225 cuts with 16 mm Ø

Electro-hydraulic Battery Powered Steel Cutter OS-19 ACBL

Particularly quick cuts, handy and strong design. The new electro-hydraulic steel cutter with extra-fast cutting capacity. Equipped with the latest brushless 18 volt motor and lithium-ion battery. cutter head can be rotated 360°.



Details

- safe and spark-free cutting of steel rods, wire and reinforcing steel up to Ø 20 mm
- brushless 18 volt motor - runs cooler and more efficiently for a longer service life of the motor and the battery
- no need to replace the carbon brushes
- fast and single cutting
- four-edged exchangeable blade - economical
- cutter head rotatable by 360° for optimal cutting position
- adjustable stepless stop for optimal cutting at 90°
- additional handle for ergonomic cutting

CUTTING CAPACITY MAX. Ø	20 mm
CUTTING SPEED	4.5 s
WEIGHT	10.9 kg
VOLTAGE	18 V
BATTERY TYPE	Lithium-ion
CUTTING POWER	11.3 t
BATTERY CAPACITY	5 A · h
DIMENSIONS (L X B X H)	387 x 301 x 132 mm
MODEL	OS19 ACBL
ART-NO.	CE457
REPLACEM. BLADE	ART-NO. Z3052
REPLACEM. BLADE	ART-NO. Z1902

Extra fast cuts

High battery performance: approx. 4.5 seconds/cut 135 cuts with 20 mm Ø



Vicente Madrid

Sales Manager Industrial Equipment and Tools –
Contact person in the field of steel cutting and bending equipment

THE SPECIAL KRENN SERVICE Personal advice is a top priority at KRENN!

Our goal is to select the optimum cutting device for your requirements – or to develop it from scratch. Because only then is maximum safety, ergonomic working and cost-effectiveness guaranteed.

Let our cutting experts advise you – on site or by phone. We will also be happy to work with you to develop cutting solutions tailored to your needs by equipping KRENN machines with the right accessories or adapting and further developing them for you.

Call us, our consultants are there for you!

For a telephone consultation you can reach me at
+49 (0) 821 20793-18
vicente.madrid@krenn.de

Electro-hydraulic Battery Powered Steel Cutter KPC-12 ACNL

Slim cutter head - powerful drive.



Details

- small, slim cutter head
- cutter head similar to a bolt cutter
- compact, light and easy to handle
- exchangeable cutting jaws

CUTTING CAPACITY MAX. Ø	12 mm	
CUTTING SPEED	3 s	
WEIGHT	7 kg	
VOLTAGE	18 V	
BATTERY TYPE	Lithium-ion	
CUTTING POWER	7 t	
DIMENSIONS (L X B X H)	449x107x317 mm	
MODEL	KPC12 ACNL	
ART-NO.	CE376	
REPLACEM. BLADE	ART-NO.	Z3081 fixed
REPLACEM. BLADE	ART-NO.	Z3082 mobile
REPL. BATTERY	ART-NO.	Z1909

The extra slim model

Especially small and slim cutter head, ideal for easy cutting of reinforcing steel mesh close to the welding points and in hard-to-reach areas.

Electro-hydraulic Battery Powered Steel Cutter KMU-16 ACNL



Details

- for cutting wire, bolts, rebar, locks, container seals, etc.
- cutter head similar to a bolt cutter
- can be fitted with special blades for cutting high-strength wire such as prestressing steel strand, prestressing steel and spring steel
- powerful, sturdy, safe
- double-edged exchangeable blade
- with relief valve (can be operated without tools)

CUTTING CAPACITY MAX. Ø	16 mm	
CUTTING SPEED	4 s	
WEIGHT	9.18 kg	
VOLTAGE	18 V	
BATTERY TYPE	Lithium-ion	
CUTTING POWER	9.5 t	
DIMENSIONS (L X B X H)	490x135x395 mm	
MODEL	CE396	
ART-NO.	CE379 with special blade	
REPLACEM. BLADE	ART-NO.	U1001
REPLACEM. BLADE	ART-NO.	U1150 special
REPL. BATTERY	ART-NO.	Z1909

The sturdy model

Can be equipped with special blades for cutting high-tensile wire wire such as pre-stressed steel and spring steel.

Electro-hydraulic Steel Cutter OS-16 C



Details

- for fast, clean cutting of wire
- low-fatigue work, low weight

CUTTING CAPACITY MAX. Ø	16 mm
CUTTING SPEED	2.5 s
WEIGHT	5,8 kg
VOLTAGE	230 V
POWER	580 W
CUTTING POWER	8 t
FREQUENCY	50 Hz
DIMENSIONS (L X B X H)	378x108x205 mm
MODEL	OS16 C
ART-NO.	CE625
REPLACEM. BLADE	ART-NO. Z3040

Electro-hydraulic Steel Cutter OS-19 CN



Details

- compact design

CUTTING CAPACITY MAX. Ø	20 mm
CUTTING SPEED	2.5 s
WEIGHT	12,2 kg
VOLTAGE	220 V
POWER	1330 W
CUTTING POWER	12 t
FREQUENCY	50 Hz
DIMENSIONS (L X B X H)	396x112x220 mm
MODEL	OS19 CN
ART-NO.	CE631
REPLACEM. BLADE	ART-NO. Z3052

Electro-hydraulic Steel Cutter OS-22 C



Details

- compact design, sturdy construction
- top ergonomics, perfect handling
- for fast and safe cutting of wire

CUTTING CAPACITY MAX. Ø	22 mm
CUTTING SPEED	3 s
WEIGHT	13,7 kg
VOLTAGE	230 V
POWER	940 W
CUTTING POWER	16 t
FREQUENCY	50 Hz
DIMENSIONS (L X B X H)	414x112x238 mm
MODEL	OS22 C
ART-NO.	CE635
REPLACEM. BLADE	ART-NO. Z3053

Electro-hydraulic Steel Cutter OS-25 CN



Details

- with powerful electro-hydraulic
- high performance and reliability
- long service life

CUTTING CAPACITY MAX. Ø	25 mm
CUTTING SPEED	3.5 s
WEIGHT	22 kg
VOLTAGE	230 V
POWER	1430 W
CUTTING POWER	20 t
FREQUENCY	50 Hz
DIMENSIONS (L X B X H)	480x138x270mm
MODEL	OS25 CN
ART-NO.	CE641
REPLACEM. BLADE	ART-NO. Z3054

Electro-hydraulic Steel Cutter OS-32 CN



Details

- very high cutting power

CUTTING CAPACITY MAX. Ø	32 mm
CUTTING SPEED	7 s
WEIGHT	37,6 kg
VOLTAGE	230 V
POWER	1430 W
CUTTING POWER	32.2 t
FREQUENCY	50 Hz
DIMENSIONS (L X B X H)	543x167,5x289mm
MODEL	OS32 CN
ART-NO.	CE647
REPLACEM. BLADE	ART-NO. Z3064

Electro-hydraulic Steel Cutter IS-16 SMC-E



Details

- the most frequently used steel cutter in the construction industry
- very light and easy to handle
- for fast cutting of rebar and welded wire mesh
- up to a maximum of 16 mm Ø
- economical - four-edged exchangeable blade
- powerful motor
- sturdy cutter head
- ergonomic

CUTTING CAPACITY MAX. Ø	16 mm
CUTTING SPEED	2 s
WEIGHT	5.3 kg
VOLTAGE	230 V
POWER	900 W
CUTTING POWER	7.5 t
DIMENSIONS (L X B X H)	414 x 118 x 152 mm
MODEL	IS16 SMC-E
ART-NO.	CE217
REPLACEMENT BLADES/SET	ART-NO. Z1141

The extra-light model.

Very light and easy to handle, more than 20% lighter than comparable electro-hydraulic steel cutters.

Electro-hydraulic Steel Cutter KPC-12

Slim cutter head - powerful drive.



Details

- cuts reinforcing steel up to max. 12 mm Ø
- small, slim cutter head
- cutter head similar to a bolt cutter
- compact, light and easy to handle
- exchangeable cutting jaws
- powerful electric motor

CUTTING CAPACITY MAX. Ø	12 mm
CUTTING SPEED	1.5 s
WEIGHT	6 kg
POWER	1200 W
CUTTING POWER	7 t
DIMENSIONS (L X B X H)	510 x 110 x 135 mm
MODEL	KPC-12
ART-NO.	CE390
REPLACEM. BLADE	ART-NO. Z3081 fixed
REPLACEM. BLADE	ART-NO. Z3082 mobile

The extra slim model.

Especially small and slim cutter head, ideal for easy cutting of welded wire meshes close to the welding points and in hard-to-reach areas.

Electro-hydraulic Steel Cutter KMU-16

Sturdy cutter head - powerful drive, can be equipped with special blades.



Details

- cuts reinforcing steel up to max. 16 mm Ø
- can be fitted with special blades for cutting high tensile wire such as pre-stressing steel and spring steel
- powerful, very sturdy, safe steel cutter
- cutter head similar to a bolt cutter
- two-edged exchangeable blade
- With relief valve (can be operated without tools)
- high cutting speed: 1, 5 sec.

CUTTING CAPACITY MAX. Ø	16 mm
CUTTING SPEED	1.5 s
WEIGHT	9.5 kg
POWER	1150 W
CUTTING POWER	12 t
FREQUENCY	50 Hz
DIMENSIONS (L X B X H)	520x120x130 mm
REPLACEM. BLADE	ART-NO. U1001
REPLACEM. BLADE	ART-NO. U1150 special

MODEL	ART-NO.	VOLTAGE	SPECIAL FEATURE
KMU16	CE306	230 V	—
KMU16	CE308	110 V	—
KMU16	CE314	230 V	with special blade

The sturdy model.

Can be equipped with special blades for cutting high-strength wire such as pre-pressed steel and spring steel.

Electro-hydraulic Steel Cutter KTR-16

Strong cutter head - powerful drive, can be equipped with special knives.



Details

- cuts rebar up to max. 16 mm Ø
- can be fitted with special blades for cutting chains, guy strands and spring steel
- powerful, sturdy, safe
- two-edged exchangeable blade
- with relief valve (can be operated without tools)
- High cutting speed: 1.5 sec.

CUTTING CAPACITY MAX. Ø	16 mm
CUTTING SPEED	1.5 s
WEIGHT	9,1 kg
POWER	1150 W
CUTTING POWER	12 t
FREQUENCY	50 Hz
DIMENSIONS (L X B X H)	400x120x240 mm
REPLACEM. BLADE	ART-NO. U1001
REPLACEM. BLADE	ART-NO. U1150 special

MODEL	ART-NO.	VOLTAGE	SPECIAL FEATURE
KTR16	CE317	230 V	—
KTR16	CE318	110 V	—
KTR16	CE316	230 V	with special blade

Electro-hydraulic Steel Cutter KTR-19 N

With special Blades.



Details

- blade made of high-grade tempered tool steel with special geometry
- for cutting guy strands, pre-stressed steel and anchor rods up to max. 16 mm Ø

CUTTING CAPACITY MAX. Ø	19 mm
CUTTING SPEED	2.5 s
WEIGHT	15.9 kg
VOLTAGE	230 V
POWER	1150 W
CUTTING POWER	25 t
FREQUENCY	50 Hz
DIMENSIONS (L X B X H)	480x140x235 mm
REPLACEM. BLADE	ART-NO. U3301

MODEL	ART-NO.	SPECIAL FEATURE
KTR19 N	CE321	–
KTR19 N	CE322	with fixed blade Ø 23.5 mm
KTR19 N	CE323	with fixed blade Ø 23.5 mm, Folding stop

Electro-hydraulic Steel Cutter KTR-22 N



Details

- for safe and ergonomic cutting of wire and rebar

CUTTING CAPACITY MAX. Ø	22 mm
CUTTING SPEED	3 s
WEIGHT	13 kg
POWER	1150 W
CUTTING POWER	22 t
FREQUENCY	50 Hz
DIMENSIONS (L X B X H)	450x140x235 mm
REPLACEM. BLADE	ART-NO. U2027

MODEL	ART-NO.	VOLTAGE	SPECIAL FEATURE
KTR22 N	CE326	230 V	–
KTR22 N	CE343	230 V	Head rotated 180 °
KTR22 N	CE339	230 V	with turned head to the left
KTR22 N	CE338	230 V	with turned head to the right
KTR22 N	CE328	110 V	–

Electro-hydraulic Steel Cutter KTR-26



Details

- for cutting wire and rebar

CUTTING CAPACITY MAX. Ø	26 mm
CUTTING SPEED	4 s
WEIGHT	15.7 kg
POWER	1150 W
CUTTING POWER	32 t
FREQUENCY	50 Hz
DIMENSIONS (L X B X H)	466x160x270 mm
REPLACEM. BLADE	ART-NO. U3013

MODEL	ART-NO.	VOLTAGE	SPECIAL FEATURE
KTR26	CE327	230 V	with suspension
KTR26	CE337	230 V	with cutter head rotated to the left
KTR26	CE341	230 V	cutter head rotated 180°
KTR26	CE344	230 V	with motor protection hood
KTR26	CE302	230 V	with protection housing
KTR26	CE324	110 V	–

Electro-hydraulic Steel Cutter KTR-28 N



Details

- for cutting wire and rebar

CUTTING CAPACITY MAX. Ø	28 mm
CUTTING SPEED	4.5 s
WEIGHT	25 kg
VOLTAGE	230 V
POWER	1150 W
CUTTING POWER	41 t
SPECIAL FEATURE	with suspension
FREQUENCY	50 Hz
DIMENSIONS (L X B X H)	540x170x330mm
MODEL	KTR28 N
ART-NO.	CE334
REPLACEM. BLADE	ART-NO. U3017

Electro-hydraulic Steel Cutter KTR-32 N



Details

- for cutting wire and rebar

CUTTING CAPACITY MAX. Ø	32 mm
CUTTING SPEED	6 s
WEIGHT	27 kg
POWER	1150 W
CUTTING POWER	46 t
FREQUENCY	50 Hz
DIMENSIONS (L X B X H)	560x180x335 mm
REPLACEM. BLADE	ART-NO. U3015

MODEL	ART-NO.	VOLTAGE	SPECIAL FEATURE
KTR32 N	CE332	230 V	—
KTR32 N	CE342	230 V	Head rotated 180°
KTR32 N	CE331	110 V	—

Battery-powered Flush Steel Saw KFO-25 ACNL

Fast cuts, safe use and easy to handle design: Ideal for flush and free cutting of round steel, profiles and tubes for diameters of 10 mm up to max. 25 mm Ø. The material is cut with very few flying sparks. • Safe cutting - almost no generating of sparks - flush cut without burrs - cold cut • Efficient cutting - fast cut - high degree of durability • Compact construction, handy design - handle can be positioned in three positions



Cutting threaded rods to length without damaging the thread on the cutting edge. The nut can be screwed on immediately.

Details

- Cutting of reinforcing steel - even when space is limited
- sawing flush with the surface - no burrs, cold cut
- fast and safe cutting of welded wire mesh
- flush cutting of anchor bolts
- Cutting threaded rods to length without damaging the thread on the cutting edge. The nut can be screwed on immediately
- automatic adjustment of rotational speed
- high battery capacity: - at 10 mm Ø approx. 240 cuts - at 12 mm Ø approx. 165 cuts - at 20 mm Ø approx. 75 cuts

CUTTING CAPACITY Ø	10 - 25 mm
WEIGHT	4 kg
ENGINE SPEED	2200 rpm
VOLTAGE	18 V
BATTERY TYPE	Lithium-ion
BATTERY VOLTAGE	18 V
BATTERY CAPACITY	5 Ah
DIMENSIONS (L X B X H)	471 x 139 x 137 mm
MODEL	KFO25 ACNL
ART-NO.	CE426
REPL. SAWBLADE	ART-NO. Z3059
REPL. BATTERY	ART-NO. Z1902

Electro-hydraulic Chain Cutter KTC-26



Details

- with protective device for optimal safety
- cut chains up to quality grade 10, depending on the diameter

CUTTING CAPACITY MAX. Ø	26 mm	
CUTTING SPEED	3 - 4 s	
WEIGHT	24.7 kg	
POWER	1100 W	
CUTTING POWER	31 t	
OPERATING PRESSURE	550 bar	
FREQUENCY	50 Hz	
DIMENSIONS (L X B X H)	610x240x165 mm	
MODEL	KTC26/230 V	
ART-NO.	CE365	
REPLACEM. BLADE	ART-NO.	U3524 fixed A
REPLACEM. BLADE	ART-NO.	U3525 fixed B
REPLACEM. BLADE	ART-NO.	U3522 mobile

- Blade A for chains up to 13 mm Ø
- Blade B for chains from 14 mm Ø

MODEL	ART-NO.	VOLTAGE
KTC26/230 V	CE365	230 V

Electro-hydraulic Chain Cutter KTC-32



Details

- with protective device for optimal safety
- cut chains up to quality grade 10, depending on the diameter

CUTTING CAPACITY MAX. Ø	32 mm	
CUTTING SPEED	6 - 7 s	
WEIGHT	43 kg	
POWER	1100 W	
CUTTING POWER	47 t	
OPERATING PRESSURE	600 bar	
FREQUENCY	50 Hz	
DIMENSIONS (L X B X H)	700x300x165 mm	
REPLACEM. BLADE	ART-NO.	U3512 fixed A
REPLACEM. BLADE	ART-NO.	U3510 fixed B
REPLACEM. BLADE	ART-NO.	U3511 mobile

- Blade A for chains up to 24 mm Ø
- Blade B for chains from 25 mm Ø

MODEL	ART-NO.	VOLTAGE
KTC32/230 V	CE370	230 V
KTC32/110 V	CE371	110 V

Battery-powered Hydraulic Bending Tool KMU-16 P ACNL



Details

- for the safe and efficient bending of rebar or wire up to 16 mm Ø
- with lithium-ion battery

BENDING CAPACITY MAX. Ø	16 mm
WEIGHT	10.7 kg
VOLTAGE	18 V
BATTERY TYPE	Lithium-ion
BENDING POWER	10 t
DIMENSIONS (L X B X H)	560x125x 370mm
MODEL	KMU16 P ACNL
ART-NO.	FE201
REPL. BATTERY	ART-NO. Z1909

Electro-hydraulic Bending Tool KMU-16 P



Details

- for bending starter bars up to max. 16 mm Ø
- for bending wire ends in the coil up to max. 16 mm Ø

BENDING CAPACITY MAX. Ø	16 mm
WEIGHT	12 kg
VOLTAGE	230 V
POWER	1150 W
BENDING POWER	10 t
FREQUENCY	50 Hz
DIMENSIONS (L X B X H)	500x120x 230mm
MODEL	KMU16 P
ART-NO.	FE110

Bending-straightening Tool KPR-16 32



Details

- for efficient bending and straightening of rebar up to max. 32 mm Ø
- double-acting hydraulic
- bending and straightening unit can be rotated 180 °

BENDING CAPACITY MAX. Ø	16 - 32 mm
WEIGHT	32 kg
VOLTAGE	230 V
BENDING POWER	24.7 - 20 t
OPERATING PRESSURE	550 bar
FREQUENCY	50 Hz
DIMENSIONS (L X B X H)	570x270x225 mm
MODEL	KPR16 32N
ART-NO.	CE290
REPL. BATTERY	ART-NO. U1771
REPL. BATTERY	ART-NO. U1770
REPL. BATTERY	ART-NO. U1772

Pneumatic Steel Cutter KRC-6 / 6B

Light and easy to handle steel cutter series with high cutting speed.
All models are available as a short or extended version.



Details

- light and easy to handle steel cutter
- high cutting speed
- for cutting reinforcing steel, wire or packaging wire

CUTTING CAPACITY MAX. Ø	6 mm
CUTTING SPEED	1 s
WEIGHT	3.2 kg
OPERATING PRESSURE	7.5 - 8.5 bar
AIR CONSUMPTION	21-35l
DIMENSIONS (L X B X H)	
REPL. HEAD	ART-NO. P7003 center
REPL. HEAD	ART-NO. P7005 flush

MODEL	ART-NO.	SPECIAL FEATURE
	BB720	-

Pneumatic Steel Cutter KRC-6 L / 6 LB

Light and easy to handle steel cutter series with high cutting speed.
All models are available as a short or extended version.



Details

- light and easy to handle steel cutter
- high cutting speed
- for cutting reinforcing steel, wires or packaging wire
- available as extended version for convenient cutting of reinforcing steel mesh lying on the floor

CUTTING CAPACITY MAX. Ø	6 mm
CUTTING SPEED	1.0 s
WEIGHT	3 kg
OPERATING PRESSURE	7.5 - 8.5 bar
AIR CONSUMPTION	2.1 - 3.5 l
DIMENSIONS (L X B X H)	
REPL. HEAD	ART-NO. P7003 center
REPL. HEAD	ART-NO. P7005 flush

MODEL	ART-NO.	SPECIAL FEATURE
KRC6 L	BB725	-
KRC6 LB	BB719	with flush cutter head

PneuMatic Steel Cutter KRC-8 / 8B

Light and easy to handle steel cutter series with high cutting speed. All models are available as a short or extended version.



Details

- light and handy steel cutter
- high cutting speed
- for cutting reinforcing steel, wire or packaging wire

CUTTING CAPACITY MAX. Ø	8 mm
CUTTING SPEED	1 s
WEIGHT	5,8 kg
OPERATING PRESSURE	7.5 - 8.5 bar
AIR CONSUMPTION	7l
DIMENSIONS (L X B X H)	500 x 250 x 240 mm
REPL. HEAD	ART-NO. P7001 center
REPL. HEAD	ART-NO. P7005 flush
REPL. HEAD	ART-NO. P7006 for pre-stressed steel

MODEL	ART-NO.	SPECIAL FEATURE
KRC8	BB730	—
KRC8 with head KRM80L	BB738	with head KRM80L for prestressing steel max. Ø 5 mm
KRC8 B	BB735	with flush cutter head

PneuMatic Steel Cutter KRC-8 PW

Light and handy steel cutter series with high cutting speed. All models are available as a short or extended version.



Details

- light and handy steel cutter
- high cutting speed

CUTTING CAPACITY MAX. Ø	8 mm
CUTTING SPEED	1 s
WEIGHT	5,8 kg
OPERATING PRESSURE	7.5 - 8.5 bar
AIR CONSUMPTION	7 l
DIMENSIONS (L X B X H)	500 x 250 x 240 mm
REPL. HEAD	ART-NO. P7132

MODEL	ART-NO.	SPECIAL FEATURE
KRC8 PW	BB780	with cutter head for prestressing steel strand Ø 5,5 mm (3 x Ø 2, 5 mm); max. 1800 N/mm ²

Pneumatic Steel Cutter KRC-8 L / 8 LB

Light and handy steel cutter series with high cutting speed.
All models are available as a short or extended version.



Details

- light and handy steel cutter
- high cutting speed
- for cutting reinforcing steel, wires or packaging wire
- available as extended version for convenient cutting of reinforcing steel mesh lying on the floor
- also as steel strap cutter for safe and fatigue-free opening of steel strapping
- ideal for safe opening of the wire coil
- also available in short and extra long version

CUTTING CAPACITY MAX. Ø	8 mm	
CUTTING SPEED	1 s	
OPERATING PRESSURE	7.5 - 8.5 bar	
AIR CONSUMPTION	7 l	
DIMENSIONS (L X B X H)	950 x 240 x 250 mm	
REPL. HEAD	ART-NO.	P7001 center
REPL. HEAD	ART-NO.	P7005 flush
REPL. HEAD	ART-NO.	P7006 for guy strand

MODEL	ART-NO.	WEIGHT	SPECIAL FEATURE
KRC8 L	BB740	6,85 kg	—
KRC8 L with head KRM80L	BB729	6,85 kg	with cutter head KRM80L for 5.0 Ø guy strand
KRC8 LB	BB741	7,2 kg	with flush cutter head

Pneumatic Steel Cutter KRC-8 LPW

Light and handy steel cutter series with high cutting speed.
All models are available as a short or extended version.



Details

- light and handy steel cutter
- high cutting speed
- for cutting reinforcing steel, wire or packaging wire
- available as extended version for cutting prestressing steel strand 3 x 2.5 mm Ø

CUTTING CAPACITY MAX. Ø	8 mm	
CUTTING SPEED	1 s	
WEIGHT	7,2 kg	
OPERATING PRESSURE	7.5 - 8.5 bar	
AIR CONSUMPTION	7 l	
DIMENSIONS (L X B X H)	950 x 250 x 240 mm	
REPL. HEAD	ART-NO.	P7132

MODEL	ART-NO.	SPECIAL FEATURE
KRC8 LPW	BB781	with cutter head for prestressing steel strand Ø 5,5 mm (3 x Ø 2, 5 mm); max. 1800 N/mm ²

Pneumatic Steel Cutter KRC-8 XL



Details

- light and handy steel cutter
- high cutting speed
- for cutting reinforcing steel, wires or packaging wire
- available as extended version for convenient cutting of reinforcing steel mesh lying on the floor

CUTTING CAPACITY MAX. Ø	8 mm
CUTTING SPEED	1 s
WEIGHT	8 kg
OPERATING PRESSURE	7.5 - 8.5 bar
AIR CONSUMPTION	7 l
DIMENSIONS (L X B X H)	1170x250x240mm
REPL. HEAD	ART-NO. P7001 center
REPL. HEAD	ART-NO. P7005 flush
REPL. HEAD	ART-NO. P7006 for prestressing steel

MODEL	ART-NO.	SPECIAL FEATURE
KRC8 XL	BB742	–
KRC8 XL with head KRM80L	BB732	with cutter head KRM80L for 5,0 Ø prestressing steel

Pneumatic Steel Cutter KRC-8 XLPW



Details

- light and handy steel cutter
- high cutting speed
- for cutting reinforcing steel, wire or packaging wire
- available as extended version for cutting prestressing steel strand 3 x 2.5 mm Ø

CUTTING CAPACITY MAX. Ø	8 mm
CUTTING SPEED	1 s
WEIGHT	7.2 kg
OPERATING PRESSURE	7.5 - 8.5 bar
AIR CONSUMPTION	7 l
DIMENSIONS (L X B X H)	950x250x240mm
REPL. HEAD	ART-NO. P7132

MODEL	ART-NO.	SPECIAL FEATURE
KRC8 XLPW	BB782	with cutter head for prestressing steel strand Ø 5,5 mm (3 x Ø 2, 5 mm); max. 1800 N/mm ²

Pneumatic Steel Cutter KRC-8 BA / LBA

Light and handy steel cutter series with high cutting speed.
All models available in short or extended versions.



Details

- Flush cutter
- with angled cutter head 30 °

CUTTING CAPACITY MAX. Ø	8 mm
CUTTING SPEED	1 s
WEIGHT	5.8 kg
OPERATING PRESSURE	7.5 - 8.5 bar
AIR CONSUMPTION	7 l
DIMENSIONS (L X B X H)	500x240x250mm
REPL. HEAD	ART-NO. P7012

MODEL	ART-NO.	SPECIAL FEATURE
KRC8 BA	BB736	with flush cutter head
KRC8 LBA	BB737	with flush cutter head



Vicente Madrid

Sales Manager Industrial Equipment and Tools –
Contact person in the field of steel cutting and bending equipment

THE SPECIAL KRENN SERVICE Personal advice is a top priority at KRENN!

Our goal is to select the optimum cutting device for your requirements – or to develop it from scratch. Because only then is maximum safety, ergonomic working and cost-effectiveness guaranteed.

Let our cutting experts advise you – on site or by phone. We will also be happy to work with you to develop cutting solutions tailored to your needs by equipping KRENN machines with the right accessories or adapting and further developing them for you.

Call us, our consultants are there for you!

For a telephone consultation you can reach me at
+49 (0)821 20793-18
vicente.madrid@krenn.de

PneuMatic Steel Cutter KRC-10 / 10 B

Light and handy steel cutter series with high cutting speed.
All models are available as a short or extended version.



Details

- light and handy steel cutter
- high cutting speed
- for cutting reinforcing steel, wire or packaging wire

CUTTING CAPACITY MAX. Ø	10 mm
CUTTING SPEED	1.5 s
WEIGHT	8 kg
OPERATING PRESSURE	7.5 - 8.5 bar
AIR CONSUMPTION	15.1 l
DIMENSIONS (L X B X H)	600x240x250 mm
REPL. HEAD	ART-NO. P7002 center
REPL. HEAD	ART-NO. P7004 flush
REPL. HEAD	ART-NO. P7014 prestressing strand

MODEL	ART-NO.	SPECIAL FEATURE
KRC10	BB700	—
KRC10 with head KR1280TM	BB718	with cutter head KR1280TM for Ø 9.5 mm prestressing steel strand/Ø 7 mm prestressing steel
KRC10 with head KR1280TS	BB753	with cutter head KR1280TS for Ø 9.5 mm prestressing steel strand/Ø 7 mm prestressing steel
KRC10 B	BB705	with flush cutting head

PneuMatic Steel Cutter KRC-10 HD

Light and handy steel cutter series with high cutting speed.
All models are available as a short or extended version.



Details

- with special cutting head for high-strength materials such as pre-stressed steel, pre-stressed strand and spring steel

CUTTING CAPACITY MAX. Ø	10 mm
CUTTING SPEED	1.5 s
WEIGHT	8 kg
OPERATING PRESSURE	7.5 - 8.5 bar
AIR CONSUMPTION	15.1 l
DIMENSIONS (L X B X H)	600x240x250 mm
REPL. HEAD	ART-NO. P7117

MODEL	ART-NO.	SPECIAL FEATURE
KRC10 HD	BB716	Heavy Duty für 9,5 mm Ø prestressing steel strand/6 mm Ø prestressing steel

PneuMatic Steel Cutter KRC-10 L / 10 LB

Light and handy steel cutter series with high cutting speed.
All models are available as a short or extended version.



Details

- light and handy steel cutter
- high cutting speed
- for cutting reinforcing steel, wires or packaging wire
- extended version, for convenient cutting of welded wire mesh lying on the floor

CUTTING CAPACITY MAX. Ø	10 mm
CUTTING SPEED	1.5 s
OPERATING PRESSURE	7.5 - 8.5 bar
AIR CONSUMPTION	15.1 l
DIMENSIONS (L X B X H)	950x240x250 mm
REPL. HEAD	ART-NO.
	P7002 center
REPL. HEAD	ART-NO.
	P7004 flush
REPL. HEAD	ART-NO.
	P7014 for prestressing strand

MODEL	ART-NO.	WEIGHT	SPECIAL FEATURE
KRC10 L	BB710	9.3 kg	—
KRC10 L with head KRI280TS	BB754	9.3 kg	with cutter head KRI280TS for Ø 9.5 mm prestressing strand/7 Ø prestressing steel
KRC10 L with head KRI280TM	BB713	8.85 kg	with cutter head KRI280TM for Ø 9.5 mm prestressing strand/7 Ø prestressing steel
KRC10 LB	BB712	9.3 kg	with flush cutter head

PneuMatic Steel Cutter KRC-1L HD

Light and handy steel cutter series with high cutting speed.
All models are available as a short or extended version.



Details

- with special cutting head for high-strength materials such as pre-stressed steel, pre-stressed strand and spring steel
- in long version, for convenient cutting of materials lying on the ground

CUTTING CAPACITY MAX. Ø	10 mm
CUTTING SPEED	1.5 s
OPERATING PRESSURE	7.5 - 8.5 bar
AIR CONSUMPTION	15.1 l
DIMENSIONS (L X B X H)	950x240x250 mm
REPL. HEAD	ART-NO.
	P7117

MODEL	ART-NO.	WEIGHT	SPECIAL FEATURE
KRC10 L HD	BB717	8.85 kg	Heavy Duty für 9,5 mm Ø prestressing steel strand/6 mm Ø prestressing steel

PneuMatic Steel Cutter KRC-12 / 12 B

Light and handy steel cutter series with high cutting speed. All models are available as a short or extended version.



Details

- Light and handy steel cutter
- high cutting speed
- for easy cutting of reinforcing steel and wires up to max. 12 mm Ø
- also available with one-sided ground cutting head for flush cutting of steel mesh
- also in long version

CUTTING CAPACITY MAX. Ø	12 mm
CUTTING SPEED	4 s
OPERATING PRESSURE	7.5 - 8.5 bar
AIR CONSUMPTION	24 l
DIMENSIONS (L X B X H)	600x270x270mm
REPL. HEAD	ART-NO. P7002 center
REPL. HEAD	ART-NO. P7004 flush
REPL. HEAD	ART-NO. P7007 for pre-stressed steel
REPL. HEAD	ART-NO. P7014 for pre-stressed steel

MODEL	ART-NO.	WEIGHT	SPECIAL FEATURE
KRC12	BB750	10 kg	—
KRC12 with head KRI280TS	BB752	10 kg	with cutter head KRI280TS for Ø 12.7 mm prestressing steel strand
KRC12 with head KRI280TM	BB758	10 kg	with cutter head KRI280TM for 8 mm Ø prestressing steel
KRC12 B	BB755	10 kg	with flush cutting head

PneuMatic Steel Cutter KRC-12 L / 12 L with catch hook

Light and handy steel cutter series with high cutting speed. All models are available as a short or extended version.



Details

- light and handy steel cutter
- high cutting speed
- for cutting reinforcing steel, wires or packaging wire
- available as extended version for convenient cutting of welded wire mesh lying on the floor

CUTTING CAPACITY MAX. Ø	12 mm
CUTTING SPEED	4 s
OPERATING PRESSURE	7.5 - 8.5 bar
AIR CONSUMPTION	24 l
DIMENSIONS (L X B X H)	950x270x270mm
REPL. HEAD	ART-NO. P7002 center
REPL. HEAD	ART-NO. P7004 flush
REPL. HEAD	ART-NO. P7007 for pre-stressed steel
REPL. HEAD	ART-NO. P7014 for pre-stressed steel

MODEL	ART-NO.	WEIGHT	SPECIAL FEATURE
KRC12 L	BB760	12 kg	—
KRC12 L B	BB756	12 kg	with flush cutter head
KRC12 L with head KRI280TS	BB766	12.5 kg	with cutter head KRI280TS for Ø 12.7 mm prestressing steel strand
KRC12 L with head KRI280TM	BB759	12 kg	with cutter head KRI280TS for Ø 8 mm prestressing steel
KRC12L with head KRI280TS	BB767	12.5 kg	with catch hook and cutter head KRI280TS für Ø 12,7 mm prestressing steel strand

PneuMatic Steel Cutter KRC-12 HD

Light and handy steel cutter series with high cutting speed. All models are available as a short or extended version. Strengthened construction.



Details

- Can be equipped with a special cutter head for high-strength materials such as pre-stressed steel, guy strands and spring steel

CUTTING CAPACITY MAX. Ø	12 mm
CUTTING SPEED	4 s
WEIGHT	10 kg
OPERATING PRESSURE	7.5 - 8.5 bar
AIR CONSUMPTION	24 l
DIMENSIONS (L X B X H)	600x270x270mm
REPL. HEAD	ART-NO. P7117

MODEL	ART-NO.	SPECIALTY
KRC12 HD	BB751	Cutting capacity 12 mm Ø (980 N/mm ²), 8 mm Ø (1760 N/mm ²), prestressing steel strand 12.5 mm Ø (7 x 4 mm Ø, max. 1760 N/mm ²)

PneuMatic Steel Cutter KRC-12 LHD

Light and handy steel cutter series with high cutting speed. All models are available as a short or extended version. Strengthened construction.



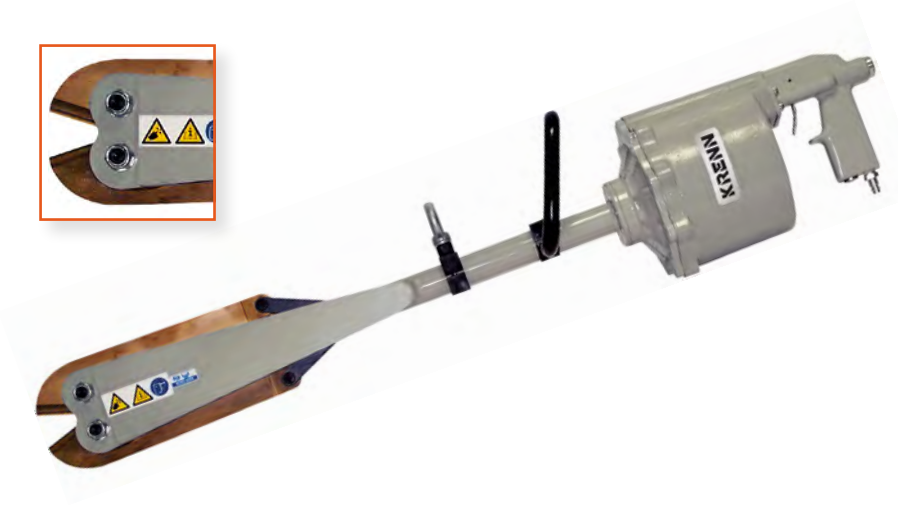
Details

- can be equipped with a special cutter head for high-strength materials such as pre-stressed steel, guy strands and spring steel

CUTTING CAPACITY MAX. Ø	12 mm
CUTTING SPEED	4 s
WEIGHT	12.5 kg
OPERATING PRESSURE	7.5 - 8.5 bar
AIR CONSUMPTION	24 l
DIMENSIONS (L X B X H)	950x270x270mm
REPL. HEAD	ART-NO. P7117

MODEL	ART-NO.	SPECIALTY
KRC12 LHD	BB761	Cutting capacity 12 mm Ø (980 N/mm ²), 8 mm Ø (1760 N/mm ²), prestressing steel strand 12.5 mm Ø (7 x 4 mm Ø, max. 1760 N/mm ²)

PneuMatic Steel Cutter KRC-16 / 16 with catching device



Details

- sturdy steel cutter
- for cutting prestressing steel and strand up to 16 mm (7 x 5 mm Ø)

CUTTING CAPACITY MAX. Ø	16 mm
CUTTING SPEED	6 s
OPERATING PRESSURE	7.5 - 8.5 bar
AIR CONSUMPTION	48 l
DIMENSIONS (L X B X H)	1120x270x270 mm
REPL. HEAD	ART-NO. P7008
REPL. HEAD	ART-NO. P7009

MODEL	ART-NO.	WEIGHT	SPECIAL FEATURE
KRC16	BB770	18 kg	—
KRC16 with catching device	BB773	18 kg	with catching device

Replacement Head KRC for pre-stressed steel and pre-stressed steel strand

MODEL	ART-NO.	SPECIAL FEATURE	FOR MODEL
KRM80L	P7006	for 5.0 Ø mm prestressing steel, weight: 0.38 kg	KRC8/8 L
KRI280TM	P7014	for 9.5 Ø mm prestressing steel strand/7 Ø mm prestressing steel (KRC10)/8 Ø mm pre-stressed steel (KRC12)	KRC10/10 L/12/12 L
KRI280TS	P7007	for 12.7 Ø mm prestressing steel strand, weight: 0.31 kg	KRC12/12 L
KRI68060R	P7009	for 16.0 Ø mm prestressing steel strand	KRC16
KRI48060V	P7117	for 9,5 Ø mm prestressing steel strand (KRC10 HD)/12,7 Ø mm prestressing steel strand (KRC12 HD), weight: 1.74 kg	KRC10/10 L/12/12 L HD

PneuMatic Steel Cutter ABP-450



Details

- for cutting of welded wire mesh
- very suitable for cutting thin packaging wires
- high cutting speed
- also available with protective device

CUTTING CAPACITY MAX. Ø	6 mm
CUTTING SPEED	1 s
WEIGHT	5 kg
OPERATING PRESSURE	6 - 10 bar
AIR CONSUMPTION	2.1 - 3.5 l
DIMENSIONS (L X B X H)	460 x 90 x 210 mm
MODEL	ABP450
ART-NO.	BB600
REPL. HEAD	ART-NO. P1170

PneuMatic Steel Cutter ABP-600



Details

- for cutting welded wire mesh
- very suitable for cutting packaging wire on bales of paper or cellulose
- also with protection device
- also with two-hand operation (optional)

CUTTING CAPACITY MAX. Ø	8 mm
CUTTING SPEED	1 s
WEIGHT	7 kg
OPERATING PRESSURE	6 - 10 bar
AIR CONSUMPTION	5.9 - 9.7 l
DIMENSIONS (L X B X H)	460 x 110 x 230 mm
REPL. HEAD	ART-NO. P1157

MODEL	ART-NO.	SPECIAL FEATURE
ABP600	BB610	–
ABP600	BB611	with two-hand operation
ABP600	BB613	with pneumatic foot-operating switch

Shear Cutter SP

With carbide blade 30 mm - shearing cut - for exact and fast cutting of high-tensile round and flat material.



CUTTING SPEED	1 s
WEIGHT	5.3 kg
OPERATING PRESSURE	6 - 10 bar
AIR CONSUMPTION	2.1 - 3.5 l
DIMENSIONS (L X B X H)	460 x 200 x 210 mm

MODEL	ART-NO.	SPECIAL FEATURE
SP2	CB012	–
SP2	CB010	with foot-operating switch

PneuMatic Steel Cutter Series RP



CUTTING SPEED	3,4 s
OPERATING PRESSURE	6 - 10 bar
AIR CONSUMPTION	15,1 l

MODEL	ART-NO.	DIMENSIONS (L X B X H)	WEIGHT	CUTTING CAPACITY MAX. Ø
RP8	BB200	430 x 450 x 550	6.5 kg	8 mm
RP10	BB210	430 x 450 x 550	7.4 kg	10 mm
RP12	BB220	430 x 450 x 550	7.4 kg	12 mm

PneuMatic Steel Cutter MP-10



CUTTING CAPACITY MAX. Ø	10 mm
CUTTING SPEED	3,4 s
WEIGHT	6,25 kg
OPERATING PRESSURE	6,25 bar
AIR CONSUMPTION	15,1 l
DIMENSIONS (L X B X H)	130x450x550mm
MODEL	MP10
ART-NO.	AB210

Bolt Cutter RPV10



CUTTING CAPACITY MAX. Ø	10 mm
CUTTING SPEED	3,4 s
WEIGHT	6,9 kg
OPERATING PRESSURE	6,25 bar
AIR CONSUMPTION	15,1 l
DIMENSIONS (L X B X H)	130x450x550mm
MODEL	RPV10
ART-NO.	BB500

Rope Cutter RPW



WEIGHT	6 kg
MODEL	RPW10
ART-NO.	BB560
MODEL	RPW14
ART-NO.	BB565

PneuMatic Front Cutter KPV300



WEIGHT	3,65 kg
MODEL	KPV300
ART-NO.	BB650

PneuMatic Steel Strapping Cutter KRC-8 S / L-S / XL-S / XXL-S

For safe and quick cutting of steel strappings. Especially when opening steel strapping, practice shows that there is an increased risk of injury! Ideal for safe and effortless opening of steel strapping on wire coils. Large safety distance for users.

Details

- large safety distance
- with safety retention
- for safe and effortless cutting of steel strapping up to a maximum width of 51 mm and a thickness of 1.2 mm
- high cutting speed
- easy to handle

CUTTING CAPACITY MAX. Ø	51 x 1.2 mm
CUTTING SPEED	1 s
OPERATING PRESSURE	7 bar
AIR CONSUMPTION	7 l
REPL. HEAD	ART-NO. P7100



Short version KRC 8-S
LENGTH: 608 mm



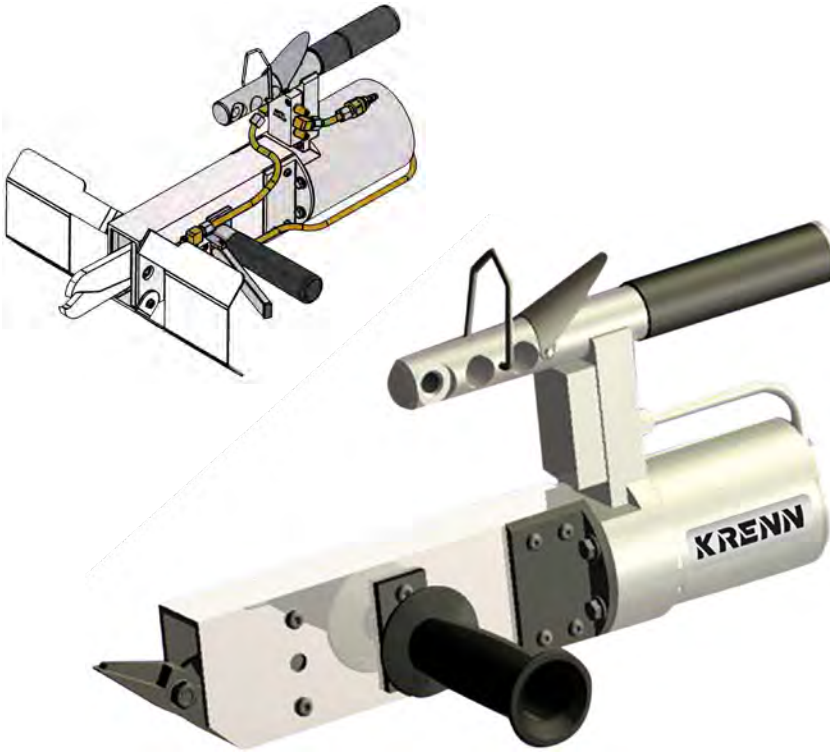
Long version KRC 8L-S
LENGTH: 1.008 mm



Extra-long version KRC 8XL-S
LENGTH: 1.208 mm

MODEL	ART-NO.	DIMENSIONS (L X B X H)	WEIGHT
KRC8 S	BB744	608 x 253 x 245 mm	6.9 kg
KRC8 L-S	BB743	1008 x 253 x 245 mm	8.3 kg
KRC8 XL-S	BB746	1208 x 253 x 245 mm	9.8 kg
KRC8 XXL-S	BB748	2150 x 253 x 245 mm	12 kg

Pneumatic Steel Strapping Cutter HSP / HSP-601 PG



Details

- for cutting steel strapping or packaging straps on paper or pulp bales
- high cutting speed
- also with protective device

CUTTING SPEED	1 s
OPERATING PRESSURE	6 - 10 bar
DIMENSIONS (L X B X H)	460 x 90 x 210 mm

MODEL	ART-NO.	CUTTING CAPACITY MAX. Ø	WEIGHT	AIR CONSUMPTION	SPECIAL FEATURE	REPL. HEAD ART-NO.
HSP450	BB570	32 x 0.9 mm	5 kg	2,91 - 3,5 l	–	P7010
HSP600	BB575	51 x 1.2 mm	5 kg	2,91 - 3,5 l	–	P7011 0
HSP6001 PG	BB620	–	7 kg	5,9 - 3,5 l	new design, with cutting head similar to wire rope cutting head (beak cutting head) with handle and hand guard, equipped with two-hand operation (further valve) in combination with new handle	U3590

Rebar Cutter KBT-30

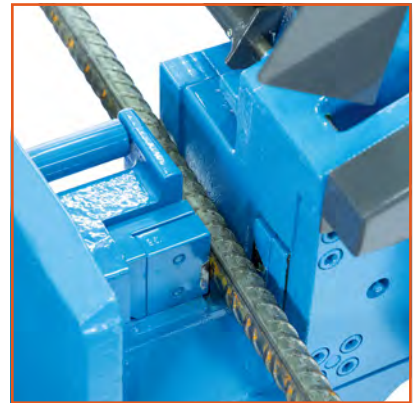
Electro-mechanical rebar cutter for efficient, safe and ergonomic cutting of reinforcing steel bars.



Details

- safe and efficient cutting without effort or generating sparks
- high cutting speed
- suitable for continuous operation
- sturdy and durable blade made of hardened tool steel
- incl. electric foot switch (4 m cable)

CUTTING SPEED	1.0 s
WEIGHT	240 kg
VOLTAGE	400 V
POWER	2200 W
FREQUENCY	50 Hz
DIMENSIONS (L X B X H)	850x450x700mm



MODEL	ART-NO.	SPECIALFEATURE	CUTTING CAPACITY MAX. FOR ROUND MATERIAL	
			HRC 36/SINGLE 1.200 N/mm ²	HRC 52/SINGLE 1.800 N/mm ²
KBT30	CMTC31	—	1 Rod 26 mm Ø/2 Rods 18 mm Ø/ 3 Rods 14 mm Ø/4 Rods 12 mm Ø mm	1 Rod 22 mm Ø/2 Rods 16 mm Ø/ 3 Rods 12 mm Ø/4 Rods 10 mm Ø mm
KBT30	CMTC32	with length stop	1 Rod 26 mm Ø/2 Rods 18 mm Ø/ 3 Rods 14 mm Ø/4 Rods 12 mm Ø mm	1 Rod 22 mm Ø/2 Rods 16 mm Ø/ 3 Rods 12 mm Ø/4 Rods 10 mm Ø mm
KBT30	CMTC33	with platform	1 Rod 26 mm Ø/2 Rods 18 mm Ø/ 3 Rods 14 mm Ø/4 Rods 12 mm Ø mm	1 Rod 22 mm Ø/2 Rods 16 mm Ø/ 3 Rods 12 mm Ø/4 Rods 10 mm Ø mm

Rebar Cutter KBT-36

Electro-mechanical rebar cutter for efficient, safe and ergonomic cutting of reinforcing steel bars.

Details

- safe and efficient cutting without effort or generating sparks
- high cutting speed
- suitable for continuous operation
- sturdy and durable blade made of hardened tool steel



CUTTING SPEED	1.0 s	
WEIGHT	350 kg	
VOLTAGE	400 V	
POWER	2200 W	
FREQUENCY	50 Hz	
DIMENSIONS (L X B X H)	920x530x720mm	
LENGTH STOP KBT	ART-NO.	S4101
BLADE KBT	ART-NO.	S0036
BLADE KBT	ART-NO.	S0037as of 07/21



MODEL	ART-NO.	SPECIAL FEATURE	CUTTING CAPACITY MAX. FOR ROUND MATERIAL	
			650 N/MM ²	850 N/MM ²
KBT36	CMTC37	with electric foot switch (4 m cable)	1 Rod 32 mm Ø/2 Rods 20 mm Ø/ 3 Rods 16 mm Ø/4 Rods 12 mm Ø	1 Rod 28 mm Ø/2 Rods 18 mm Ø/ 3 Rods 14 mm Ø/4 Rods 10 mm Ø

KRENN

PRODUCT GROUP 03
HIGHLIGHT

STRAIGHTENER
KTR-2
ACNL/BATTERY



HYDRAULIC DEVICES AND UNITS



Scan now to go
straight to the
products

KRENN's professional hydraulic devices are used to rapidly and safely cut and straighten wire and steel bars. Compact design and ease of use characterise these cutting tools. Our sturdy machines impress the wire industry thanks to their reliability and handling properties. Our high-quality hydraulic units are optimally adjusted to run our devices.

Hydraulic straighteners



Page 66-67

Hydraulic steel cutters



Page 68-70

Hydraulic drive units



Page 71

Battery-powered Hydraulic Straightener KTR-2 ACNL



Details

- electro-hydraulic straightener with battery drive, for straightening wire when working from coil
- for straightening wire samples in the test laboratory
- very handy and easy to use
- very fast and flexible

STRAIGHTENING CAPACITY MAX. Ø	20 mm
STRAIGHTENING CAPACITY MIN. Ø	8 mm
WEIGHT	8.5 kg
STRAIGHTENING FORCE	8 t
VOLTAGE	18 V
POWER	450 W
BATTERY TYPE	Lithium-ion
OPERATING PRESSURE	300 bar
MATERIAL STRENGTH MAX. Ø	700 N/mm ²
DIMENSIONS (L X B X H)	507 x 140 x 317 mm
MODEL	KTR2 ACNL
ART-NO.	CE377
REPL. BATTERY	ART-NO. Z1909

Battery-powered Hydraulic Straightener KTR-3 ACNL



Details

- electro-hydraulic wire straightener with battery drive, for straightening wire when working from coil
- for straightening wire samples in the test laboratory
- very handy and easy to use
- very fast and flexible
- straightening head rotatable
- very robust straightening head
- for wire and bar material up to max. Ø 32 mm
- rocker switch for easy forward and backward feed.

STRAIGHTENING CAPACITY MAX. Ø	32 mm
STRAIGHTENING CAPACITY MIN. Ø	20 mm
WEIGHT	15 kg
STRAIGHTENING FORCE	11 t
VOLTAGE	18 V
BATTERY TYPE	Lithium-ion
OPERATING PRESSURE	300 bar
MATERIAL STRENGTH MAX. Ø	700 N/mm ²
DIMENSIONS (L X B X H)	574 x 259 x 342 mm
MODEL	KTR3 ACNL
ART-NO.	CE296
REPL. BATTERY	ART-NO. Z1909

Hydraulic-Straightener KTR-1



STRAIGHTENING CAPACITY MAX. Ø	25 mm
WEIGHT	7 kg
STRAIGHTENING FORCE	6 t
OPERATING PRESSURE	380 bar
SPECIAL FEATURE	with 3 m hose pair
DIMENSIONS (L X B X H)	450x230x200mm
MODEL	KTR1
ART-NO.	C3050

Hydraulic-Straightener KTR-3



Details

- hydraulic wire straightener, for straightening wire when working from the coil
- for straightening wire samples in the test laboratory
- very handy and easy to use

STRAIGHTENING CAPACITY MAX. Ø	32 mm
WEIGHT	15.8 kg
STRAIGHTENING FORCE	11 t
OPERATING PRESSURE	380 bar
SPECIAL FEATURE	operating with hydraulic drive unit KVDS 380 or KVDS 700 G28
MODEL	KTR3
ART-NO.	C3052

Hydraulic-Cutter KT-16



Details

- hydraulic cutter tool for cutting wire in the coil or for taking wire samples
- light and handy
- operating with with hydraulic drive unit KVDS700 or KHF700

CUTTING CAPACITY MAX. Ø	16 mm	
WEIGHT	5 kg	
CUTTING FORCE	16 t	
OPERATING PRESSURE	700 bar	
DIMENSIONS (L X B X H)	265 x 90 x 220 mm	
MODEL	KT16	
ART-NO.	CE760	
REPLACEM. BLADE	ART-NO.	U1001
REPLACEM. BLADE	ART-NO.	U1150 special

Hydraulic-Cutter KTW-19

With special blade for cutting prestressed steel and prestressed guy strand.



Details

- blade made of high-quality tempered tool steel with special geometry
- for cutting prestressing steel wire and guy strands
- prestressing steel strand up to max. 16 mm Ø
- operating with hydraulic drive unit KVDS700

CUTTING CAPACITY MAX. Ø	19 mm	
WEIGHT	12.8 kg	
CUTTING FORCE	30 t	
OPERATING PRESSURE	700 bar	
DIMENSIONS (L X B X H)	360 x 140 x 220 mm	
MODEL	KTW19	
ART-NO.	CE762	
REPLACEM. BLADE	ART-NO.	U3301

Hydraulic-Cutter KT-22



CUTTING CAPACITY MAX. Ø	22 mm
WEIGHT	9 kg
CUTTING FORCE	30 t
OPERATING PRESSURE	700 bar
DIMENSIONS (L X B X H)	350x200x140mm
MODEL	KT22
ART-NO.	CE763
REPLACEM. BLADE	ART-NO. U3001

Hydraulic-Cutter KT-30

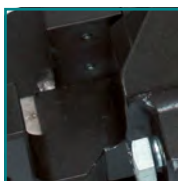


Details

- hydraulic cutter for easy cutting of rebar, wire (also from coil) or round steel up to a Ø of 30 mm
- it is characterized by its compact design, the low weight and the easy operation
- operating with hydraulic power pack KVDS700

CUTTING CAPACITY MAX. Ø	30 mm
WEIGHT	14 kg
CUTTING FORCE	40 t
OPERATING PRESSURE	700 bar
DIMENSIONS (L X B X H)	380x150x220mm
MODEL	KT30
ART-NO.	CE765
REPLACEM. BLADE	ART-NO. U3201 mobile
REPLACEM. BLADE	ART-NO. U3202 fixed

Hydraulic-Cutter KT-40



Details

- operating with hydraulic drive unit KCB700

CUTTING CAPACITY MAX. Ø	35 mm
WEIGHT	50 kg
CUTTING FORCE	63 t
OPERATING PRESSURE	700 bar
DIMENSIONS (L X B X H)	600x200x260mm
MODEL	KT40
ART-NO.	CE755
REPLACEM. BLADE	ART-NO. U3514 mobile
REPLACEM. BLADE	ART-NO. U3515 fixed
REPLACEM. BLADE	ART-NO. U3505 set old version 50x46x19 mm

Hydraulic-Cutter KT-50



Details

- hydraulic steel cutter for easy cutting of wire and rod material up to 35 mm Ø, custom-made up to 50 mm Ø
- operating with hydraulic drive unit KCB-700

CUTTING CAPACITY MAX. Ø	50 mm
WEIGHT	120 kg
CUTTING FORCE	108 t
OPERATING PRESSURE	700 bar
DIMENSIONS (L X B X H)	740x244x260mm
MODEL	KT50
ART-NO.	CE770
REPLACEM. BLADE	ART-NO. U3561

Hydraulic-Drive Unit K-VDS-380



Details

- hydraulic drive unit for 230 V
- suitable for operating the hydraulic straightener KTR1
- compact and extremely light

WEIGHT	18 kg
VOLTAGE	230 V
TANK VOLUME	2.7 l
OPERATING PRESSURE	380 bar
FREQUENCY	50 Hz
DIMENSIONS (L X B X H)	240x240x360mm
MODEL	KVDS380
ART-NO.	C3060

Hydraulic-Drive Unit KVDS-700 G28



Details

- hydraulic drive unit for 230 V
- suitable for operating the hydraulic cutters KT-16, KT-18, KT-22 and KT-30
- compact and extremely light

TANK VOLUME	2.7 l
OPERATING PRESSURE	700 bar

MODEL	ART-NO.	DIMENSIONS (L X B X H)	WEIGHT	VOLTAGE	FREQUENCY	SPECIAL FEATURE
KVDS700	C3064	400 x 230 x 440 mm	23 kg	230 V	60 Hz	with cooling unit
KVDS700	C3068	400 x 230 x 440 mm	23 kg	230 V	60 Hz	2 valves, for straighteners
KVDS700	C3069	400 x 230 x 440 mm	23 kg	230 V	50 Hz	without cooling unit

Hydraulic-Drive Unit KCB-700



Details

- hydraulic drive unit for operating the cutter tools KSG145 TH and KSG170 TH

TANK VOLUME	23 l
OPERATING PRESSURE	700 bar

MODEL	ART-NO.	DIMENSIONS (L X B X H)	WEIGHT	VOLTAGE	FREQUENCY	SPECIAL FEATURE
KCB700	CE710	680x490x710mm	94 kg	400 V	50 Hz	for KT-40, KT-50
KCB700	CE711	680x490x710mm	94 kg	230 V	50 Hz	–
KCB700	C3079	680x490x710mm	94 kg	400 V	50 Hz	with cooling unit, for KSG series

KRENN

PRODUCT GROUP 04
HIGHLIGHT

STEEL CUTTER SK22



KX – HYDRAULIC STEEL CUTTERS AND STRAIGHTENERS, HYDRAULIC MATERIAL TESTING PRESSES



Scan now to go
straight to the
products

KRENN's hydraulic steel cutters and straightening devices are particularly robust and are very suitable for the safe and effortless cutting and straightening of wire and rods up to 50 mm in diameter. These special hydraulic devices are extremely durable and low-maintenance, and have been tried and tested in the steel industry across the world for decades. With our material testing presses, we offer you a perfect solution for the compression-testing of wire samples in accordance with DIN EN 10263-1. We plan your test facility for you individually according to your wishes and carry out installation at your factory and training for your employees.

KX –
hydraulic steel cutters



Page 74-77

KX –
hydraulic straighteners



Page 78-79

KX –
hydraulic drive units/accessories



Page 80-83

KX –
hydraulic material testing presses



Page 84-85

KX - Steel Cutter SK 15

For the safe and effortless cutting of wire and bars up to 15 mm Ø - extremely durable and low-maintenance, proven for decades in the steel industry worldwide.



Handle forwards

Details

- with optional mount including rotating tool holder with 180° rotation in both directions, lockable in any position
- optionally with handle backwards
- electrically operated also available
- all cutters heads are fitted with a moving stop

CUTTING SPEED *	1 s
OPERATING PRESSURE	600 bar
CUTTING CAPACITY MAX. Ø	15 mm
NOISE EMISSION IN STANDARD OPERATION	≤70 dB
MATERIAL STRENGTH MAX. Ø	1000 N/mm ²
PISTON STROKE	15 mm
CUTTING POWER MAX.	150 kN
IDLE PRESSURE	30 - 50 bar
INLET PRESSURE MAX.	600 bar

* when operated with drive unit R4,2 or T5

MODEL	ART-NO.	DIMENSIONS (LXBXH)	WEIGHT	COUPLING CONNECTIONS	SPECIAL FEATURE
SK15	KS0028	220 x 87 x 114 mm	6 kg	Screw-in connection	with moving stop and handle forwards
SK15	KS0075	220 x 87 x 114 mm	6.2 kg	Screw-in connection	with moving stop, rotating tool holder and handle backwards

KX - Steel Cutter SK 22

For the safe and effortless cutting of wire and bars up to 22 mm Ø - extremely durable and low-maintenance, proven for decades in the steel industry worldwide.



Handle backwards

Details

- with optional mount including rotating tool holder with 180° rotation in both directions, lockable in any position
- optionally with handle backwards
- electrically operated also available
- all cutters heads are fitted with a moving stop

CUTTING SPEED *	2.6 s
OPERATING PRESSURE	600 bar
CUTTING CAPACITY MAX. Ø	22 mm
NOISE EMISSION IN STANDARD OPERATION	≤70 dB
MATERIAL STRENGTH MAX. Ø	900 N/mm ²
CUTTING POWER MAX.	280 kN
IDLE PRESSURE	30 - 50 bar
INLET PRESSURE MAX.	600 bar

* when operated with drive unit R4,2 or T5

MODEL	ART-NO.	DIMENSIONS (LXBXH)	WEIGHT	COUPLING CONNECTIONS	SPECIAL FEATURE
SK22	KS0033	268 x 122 x 156 mm	12.5 kg	Screw-in connection	with moving stop and handle forwards
SK22	KS0074	268 x 122 x 156 mm	12.85 kg	Screw-in connection	with moving stop, rotating tool holder and handle backwards

KX - Steel Cutter SK 28

For the safe and effortless cutting of wire and bars up to 28 mm Ø - extremely durable and low-maintenance, proven for decades in the steel industry worldwide.



Handle forwards



Details

- with optional mount including rotating tool holder with 180° rotation in both directions, lockable in any position
- optionally with handle backwards
- electrically operated also available
- all cutters heads are fitted with a moving stop

CUTTING SPEED *	5 s
OPERATING PRESSURE	600 bar
CUTTING CAPACITY MAX. Ø	28 mm
NOISE EMISSION IN STANDARD OPERATION	≤ 70 dB
MATERIAL STRENGTH MAX. Ø	800 N/mm ²
PISTON STROKE	28.5 mm
CUTTING POWER MAX.	400 kN
IDLE PRESSURE	30 - 50 bar
INLET PRESSUR MAX.	600 bar

* when operated with driving unit R4,2 or T5

MODEL	ART-NO.	DIMENSIONS (LXBXH)	WEIGHT	COUPLING CONNECTIONS	SPECIAL FEATURE
SK28	KS0037	290x126x179 mm	17 kg	Screw-in connection	with slide stop and handle forwards
SK28	KS0072	290x126x179 mm	17.37 kg	Screw-in connection	with slide stop, rotating tool holder and handle backwards

KX - Steel Cutter SK 28 [e]

For the safe and effortless cutting of wire and bars up to 28 mm Ø - the electrical operating version of our Steel Cutter SK 28. The cutting process can be started with a push button on the cutter or directly via the PLC of your system (when running with unit R4.2 [e]). All cutters and straighteners are available as [e]-versions.

Handle backwards



Details

- with optional mount including rotating tool holder with 180° rotation in both directions, lockable in any position
- optionally with handle forwards
- electrical operating cutter; the unit R4.2 [e] is used for operation

CUTTING SPEED *	5 s
NOISE EMISSION IN STANDARD OPERATION	≤ 70 dB
OPERATING PRESSURE	600 bar
KX - REPLACE- MENT BLADE SET	ART-NO. KS154
KX - REPLACE- MENT BLADE SET	ART-NO. KS153
KX - SEAL KIT	ART-NO. KS3088

* when operated with drive unit R4,2 [e]

MODEL	ART-NO.	DIMENSIONS (LXBXH)	WEIGHT	COUPLING CONNECTIONS	SPECIAL FEATURE
SK28 [e]	KS0101	290x126x176 mm	17 kg	Screw-in connection	with rotating tool holder, moving stop and rear handle backwards, electric [e]

KX - Steel Cutter SK 42

For the safe and effortless cutting of wire and bars up to 42 mm Ø - highly strong and durable



Details

- with optional mount including rotating tool holder with 180° rotation in both directions, lockable in any position
- optionally with handle forwards
- electrically operated also available
- all cutters heads are fitted with a moving stop

CUTTING SPEED *	7.5 s
OPERATING PRESSURE	600 bar
CUTTING CAPACITY MAX. Ø	42 mm
NOISE EMISSION IN STANDARD OPERATION	≤ 70 dB
MATERIAL STRENGTH MAX. Ø	450 N/mm ²
CUTTING PPOWER MAX.	490 kN
IDLE PRESSURE	30 - 50 bar
INLET PRESSURE MAX.	600 bar

* when operated with drive unit R4,2 or T5

MODEL	ART-NO.	DIMENSIONS (B X H)	WEIGHT	COUPLING CONNECTIONS	SPECIAL FEATURE
SK42	KS0089	157 x 220 mm	27.5 kg	Screw-in connection	with moving stop and handle forwards
SK42	KS0090	157 x 220 mm	27.65 kg	Screw-in connection	with moving stop, rotating tool holder and handle backwards

KX - Steel Cutter SK 50, milled version

For the safe and effortless cutting of wire and bars up to 50 mm Ø - extremely durable and low-maintenance, proven for decades in the steel industry worldwide.



Rear view



Details

- optionally with handle backwards
- electrically operated also available
- all cutters heads are fitted with a moving stop

CUTTING SPEED *	7.s
OPERATING PRESSURE	600 bar
CUTTING CAPACITY MAX. Ø	58 mm
NOISE EMISSION IN STANDARD OPERATION	≤ 70 dB
MATERIAL STRENGTH MAX. Ø	450 N/mm ²
CUTTING POWER MAX.	950 kN
IDLE PRESSURE	30 - 50 bar
INLET PRESSURE MAX.	600 bar
MODEL	SK50
ART-NO.	KS0219

* when operated with drive unit R7,4

MODEL	ART-NO.	WEIGHT	COUPLING CONNECTIONS	SPECIAL FEATURE
SK50	KS0219	122 kg	Screw-in connection	with moving stop and handle backwards

KX - Steel Cutter SK 50, cast version

For the safe and effortless cutting of wire and bars up to 50 mm Ø - highly strong and durable



Side view



Rear view

Details

- hydraulic cutting cylinder for large diameters and high tensile strengths
- highly strong cutter head made of cast steel
- operated by KX-Hydraulic Drive Unit R7.4

CUTTING SPEED *	7 s
OPERATING PRESSURE	600 bar
CUTTING CAPACITY MAX. Ø	50 mm
NOISE EMISSION IN STANDARD OPERATION	≤ 70 dB
MATERIAL STRENGTH MAX. Ø	800 N/mm ²
PISTON STROKE	50 mm
CUTTING POWER MAX.	1250 kN
IDLE PRESSURE	30 - 50 bar
INLET PRESSURE MAX.	600 bar
DIMENSIONS (L X B X H)	600x325x453mm

* when operated with drive unit R7,4

MODEL	ART-NO.	WEIGHT	COUPLING CONNECTIONS	SPECIAL FEATURE
SK50	KS0040	145 kg	Screw-in connection	with moving stop and handle forwards

THE SPECIAL KRENN SERVICE

Personal advice is a top priority at KRENN!

Our goal is to select the optimum cutting device for your requirements – or to develop it from scratch. Because only then is maximum safety, ergonomic working and cost-effectiveness guaranteed.

Let our cutting experts advise you – on site or by phone. We will also be happy to work with you to develop cutting solutions tailored to your needs by equipping KRENN machines with the right accessories or adapting and further developing them for you.

Call us, our consultants are there for you!

For a telephone consultation you can reach us at

+49 (0)821 20793-27

info@krenn.de

KX - Straightener RK 20

For the safe and effortless straightening of wire and bars up to 22 mm Ø
- extremely durable and low-maintenance, proven for decades in the steel industry worldwide.



Handle forwards

Details

- with optional mount including rotating tool holder with 180° rotation in both directions, lockable in any position
- optionally with handle backwards
- electrically operated also available

OPERATING PRESSURE	600 bar
STRAIGHT. CAPACITY MAX. Ø	22 mm
NOISE EMISSION IN STANDARD OPERATION	≤ 70 dB
STRAIGHTENING FORCE MAX.	150 kN
IDLE PRESSURE	30 - 50 bar
INLET PRESSURE MAX.	600 bar

MODEL	ART-NO.	WEIGHT	COUPLING CONNECTIONS	SPECIAL FEATURE
RK20	KS0115	7,7 kg	Screw-in connection	with rotating tool holder and handle backwards
RK20	KS0132	7,7 kg	Screw-in connection	handle forwards

KX - Straightener RK 26

For the safe and effortless straightening of wire and bars up to 32 mm Ø
- extremely durable and low-maintenance, proven for decades in the steel industry worldwide.



Handle backwards

Details

- with optional mount including rotating tool holder with 180° rotation in both directions, lockable in any position
- optionally with handle forwards
- electrically operated also available

OPERATING PRESSURE	600 bar
STRAIGHT. CAPACITY MAX. Ø	32 mm
NOISE EMISSION IN STANDARD OPERATION	≤ 70 dB
STRAIGHTENING FORCE MAX.	280 dB
IDLE PRESSURE	30 - 50 bar
INLET PRESSURE MAX.	600 bar

MODEL	ART-NO.	WEIGHT	SPECIAL FEATURE
RK26	KS0113	19 kg	with rotating tool holder and handle backwards

KX - Straightener RK 40

For the safe and effortless straightening of wire and bars up to 42 mm Ø – extremely durable and low-maintenance, proven for decades in the steel industry worldwide.



Details

- with optional mount including rotation tool holder with 180° rotation in both directions, lockable in any position
- optionally with handle handle backwards
- electrically operated also available

OPERATING PRESSURE	600 bar
STRAIGHT. CAPACITY MAX. Ø	42 mm
NOISE EMISSION IN STANDARD OPERATION	≤ 70 dB
STRAIGHTENING FORCE MAX.	400 kN
IDLE PRESSURE	30 - 50 bar
INLET PRESSURE MAX.	600 bar

MODEL	ART-NO.	WEIGHT	COUPLING CONNECTIONS	SPECIAL FEATURE
RK40	KS0109	26 kg	Screw-in connection	new, with rotating tool holder and handle backwards

THE SPECIAL KRENN SERVICE Personal advice is a top priority at KRENN!

Our goal is to select the optimum cutting device for your requirements – or to develop it from scratch. Because only then is maximum safety, ergonomic working and cost-effectiveness guaranteed.

Let our cutting experts advise you – on site or by phone. We will also be happy to work with you to develop cutting solutions tailored to your needs by equipping KRENN machines with the right accessories or adapting and further developing them for you.

Call us, our consultants are there for you!

For a telephone consultation you can reach us at
+49 (0) 821 20793-27
info@krenn.de

KX - Hydraulic Drive Units, Series R

For driving KX Steel Cutters and KX Straighteners



Double unit
R4,2/4,2



R3,7



R4,2 Oil cooling



R7,4

Details

- Drive Units R4.2 - 4.2 B50 for operating two devices simultaneously
- Cart for drive units available on request
- all voltages on request

VOLTAGE	3 x 400 V	
OPERATING PRESSURE	600 bar	
OIL PAN	ART-NO.	KP0330
OIL PAN	ART-NO.	KP0317

MODEL	ART-NO.	FLOW RATE	TANK VOLUME	WEIGHT	POWER CONSUMPTION	SPECIAL FEATURE
R3,7 B20	KP0042	3.7 l/min	20 l	93 kg	4 kW	—
R4,2 B50	KS0082	4.2 l/min	50 l	165 kg	4 kW	—
R4,2 B50	KP0134	4,2 l/min	50 l	180 kg	4 kW	with oil cooling
R4,2 - 4,2 B50	KS0083	2 x 4.2 l/min	50 l	165 kg	4 kW	—
R7,4 B80	KP0121	7.4 l/min	80 l	190 kg	7,5 kW	—

KX - Hydraulic Drive Unit, Series T

For driving KX Steel Cutters and KX Straighteners

Details

- Drive Units T6 for operating two devices simultaneously
- Cart for drive units available on request
- all voltages on request

VOLTAGE	3 x 400 V	
OPERATING PRESSURE	600 bar	
OIL PAN	ART-NO.	KP0319



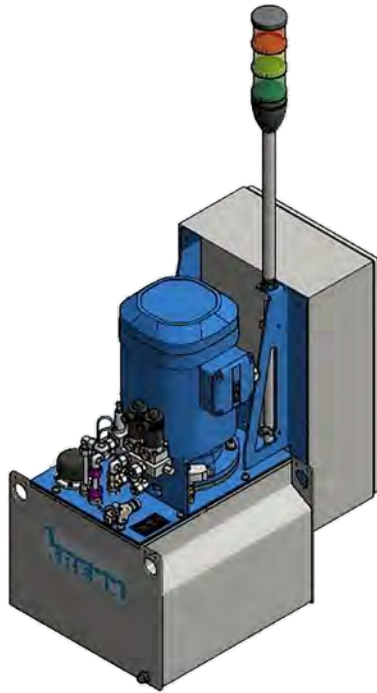
Transactor
with oil pan



MODEL	ART-NO.	FLOW RATE	TANK VOLUME	WEIGHT	POWER CONSUMPTION
T5 B30	KS6110	4.2 l/min	30 l	145 kg	4 kW
T6 B30	KS6111	2 x 4.2 l/min	30 l	165 kg	4 kW

KX - Hydraulic Drive Unit R4.2 B50 [e]

For driving KX Steel Cutters and KX Straightener of the [e]-series. Integration into the PLC of your system is possible without any problems.



Details

- with solenoid valve block
- switch box IP65 with individual wire labeling and wiring diagram
- oil level and temperature monitor with three-color signal column (automatic switch-off when threshold values are exceeded)
- energy-efficient thanks to adjustable time-out function (between 0.01s and 100h)
- modularly expandable (oil-air cooling, oil heating, etc.)
- all voltages on request

VOLTAGE	3 x 400 V	
OPERATING PRESSURE	600 bar	
OIL PAN	ART-NO.	KP0315
OIL PAN	ART-NO.	KP0317

MODEL	ART-NO.	FLOW RATE	TANK VOLUME	WEIGHT	POWER SUPPLY	SPECIAL FEATURE
R4,2 B50 [e]	KS6336	4,2 l/min	50 l	176 kg	4 kW	with control box, oil level and temperature monitor/3 x 400 V electric [e]

Oil pan for KX Hydraulic Drive Unit



Details

- available with rolls in various versions

FOR MODEL	R4.2
ART-NO.	KP0315

KX - Accessories

KX - Replacement Blades

ART-NO.	FOR MODEL	SPECIAL FEATURE
KS6174	SK 28	shearing blade GS28 Ø 16 mm, available in different versions
KS6173	SK 28	ram blade GS28 Ø 16 mm, available in different versions
KS5153	SK 28	fixed blade SK28, special alloys and special shapes on request
KS5154	SK 28	moving blade SK28, special alloys and special shapes on request



KX - Hydraulic Hoseset

ART-NO.	FOR MODEL	SPECIAL FEATURE
KS5432	SK/RK	High and low pressure hoses 5 m, incl. 4x hose whip restraint and 2x protective hose, weight: 11 kg

KX - Seal Kit

ART-NO.	FOR MODEL	SPECIAL FEATURE
KS3088	SK 28	Weight: 0.06 kg

KX - Handle

ART-NO.	FOR MODEL	SPECIAL FEATURE
KS3268	SK22, SK28, RK26	backwards, mechanical, with control slide

KX - Pressure piece

ART-NO.	FOR MODEL	SPECIAL FEATURE
KS2659	RK 20	short version - 26 mm, Ø 12 to Ø 22 mm

Spring balancer/Balancer for KX cutter heads

ART-NO.	FOR MODEL	SPECIAL FEATURE
KS0008		Type 7230/4 9 - 14 kg, weight: 4.30 kg
KS0011		Type 7241/2 20 - 30 kg, weight: 16.30 kg
KS0007		Type 7230/2 4.5 - 7 kg, weight: 3.30 kg
KS0049		Type 7230/5 13 - 17 kg, weight: 3.60 kg
B6013		Load capacity 22 - 32 kg, weight: 27.02 kg
KS50057		Typ 7251/11 140 - 150 kg, weight: 46.00 kg

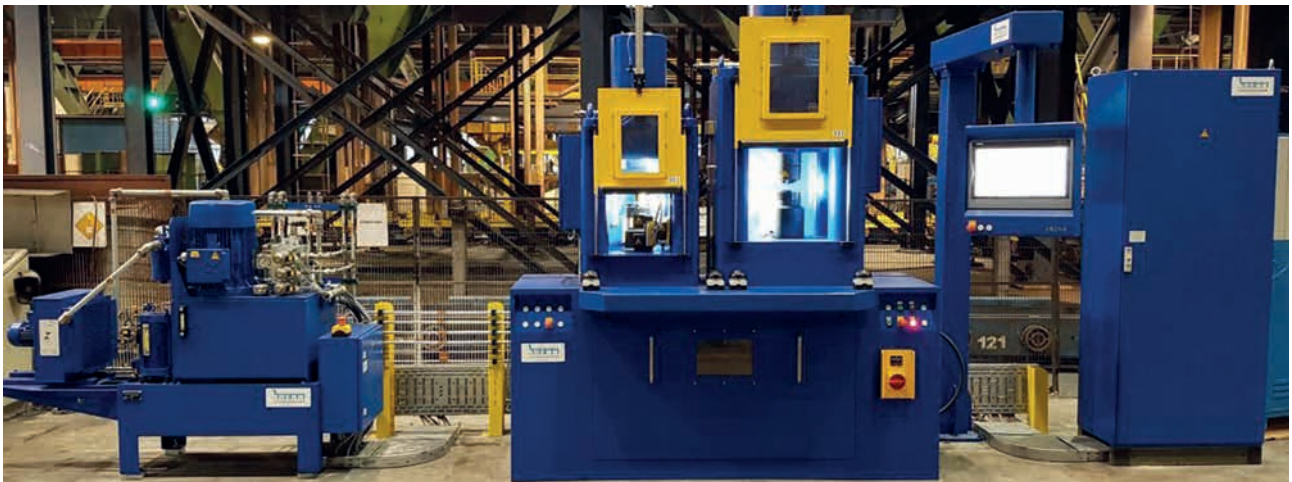
KX – HYDRAULIC MATERIAL TESTING PRESSES

The material testing presses that have been in use in the wire industry for decades for compression tests according to DIN EN 10263 have been significantly modified by us since our takeover of the corresponding division at KAMAX GmbH & Co. KG in 2015 and are now state-of-the-art. The experiences and feedback from our customers, all of them globally active steel group companies, become part of our continuous improvement process for these systems.

Our extremely sturdy base frame, tried and tested across millions of test processes, has been left largely in its traditional form, while we have concentrated above all on user-friendliness, occupational safety, sensors and controls in order to ensure the highest possible level of precision in testing during manufacture, in compliance with all the relevant standards and regulations.

Faced with extremely intensive competition, unique selling points and efficient processes are of the greatest importance. The use of our testing presses guarantees reproducible, monitored and logged quality assurance processes, which are also an important element of the IATF 16949 standard.

Incorporation into existing production data acquisition systems and/or company networks is of course possible.





Hydraulic dual press Z 160/Z 315

- new design
- with electrical controls for user-friendly format adjustment and maintenance
- the presses can be delivered as an option with sound-insulated housing

Performance characteristics

- Control via a Siemens S7-1500 controller and KRENN individual software (in several languages)
- Continuous (pre-)setting and storage of all necessary compression processes
- Cutting and compression force of up to 5000 kN (on request even > 5000 kN)
- Extremely durable and very low maintenance
- Safe operation even in climatically demanding environments thanks to an optimised heating and cooling system
- Remote maintenance option
- Individual planning of each machine to customer specifications
- Installation and user training on site by our skilled service team
- More than 90% of the components "Made in Germany"



Compression function

The compression height can be adjusted individually in order to meet the requirements of your test specification. Rolling and annealing faults can be detected through the typical fracture formations on the sample. Format changes can be carried out in a few seconds just by touching the HMI panel.

Shearing feature

Using the shearing system, the compression samples can be exactly cut to length. The sample is ejected without burrs and with smooth cut faces. The shearing blade should be selected in accordance with the wire diameter.

KRENN

PRODUCT GROUP 05
HIGHLIGHT

CUTTING DEVICE
KSG SERIES



HYDRAULIC CABLE AND WIRE CUTTERS



Scan now to go
straight to the
products

Hydraulic shears from KRENN allow the safe and rapid cutting of cables and steel wire ropes at any time. These cutters are conceived for industrial use and are suitable for the efficient cutting of steel-reinforced cables and high-tensile wire ropes. Professional KRENN cable cutters are particularly easy and comfortable to handle thanks to their ergonomic design. Our high-performance tools are driven by our powerful hydraulic units. The dual-action hydraulics prevent blockages during use.

Electro-hydraulic wire rope and
cable cutters



Page 88-89

Hydraulic cable
cutters



Page 90-91

Wire rope and Cable Cutter KRG-32 TE

For efficient, safe and ergonomic cutting of wire ropes and cables.



Details

- safe and efficient cutting without effort or generating sparks
- sturdy cutter head, specially hardened blades
- double-acting hydraulics (no blocking)
- powerful electric motor
- cuts wire ropes and cables up to 32 mm Ø, depending on the material quality

CUTTING CAPACITY MAX. Ø	32 mm	
WEIGHT	15.2 kg	
VOLTAGE	240 V	
POWER	1200 W	
CUTTING POWER	18 t	
OPERATING PRESSURE	550 bar	
DIMENSIONS (L X B X H)	560x185x240 mm	
MODEL	KRG-32 TE	
ART-NO.	CE400	
REPLACEM. BLADE	ART-NO.	CE1400 fixed
REPLACEM. BLADE	ART-NO.	CE1401 mobile

Wire rope and Cable Cutter KRG-55 TE

For efficient, safe and ergonomic cutting of wire ropes and cables.



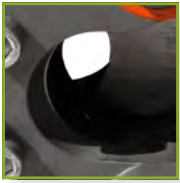
Details

- safe and efficient cutting without effort or generating sparks
- sturdy cutter head, specially hardened blades
- double-acting hydraulics (no blocking)
- powerful electric motor
- cuts wire ropes and cables up to 55 mm Ø, depending on the material quality

CUTTING CAPACITY MAX. Ø	55 mm	
WEIGHT	24.3 kg	
VOLTAGE	240 V	
POWER	1200 W	
CUTTING POWER	31 t	
OPERATING PRESSURE	550 bar	
DIMENSIONS (L X B X H)	600x185x240 mm	
MODEL	KRG-55 TE	
ART-NO.	CE405	
REPLACEM. BLADE	ART-NO.	CE1405 fixed
REPLACEM. BLADE	ART-NO.	CE1406 mobile

Hydraulic Wire rope Cutter KRG-63 TH

For efficient, safe and ergonomic cutting of wire ropes and cables.



Details

- safe and efficient cutting without effort and sparks
- sturdy cutter head, specially hardened blade
- double-acting hydraulics (no blocking)
- operating with hydraulic unit KCB 700 (400V)
- cuts wire ropes and cables up to 63 mm Ø, depending on the material quality

CUTTING CAPACITY MAX. Ø	63 mm
WEIGHT	67 kg
CUTTING POWER	87 t
OPERATING PRESSURE	700 bar
DIMENSIONS (L X B X H)	670x176x240mm
MODEL	KRG-63 TH
ART-NO.	CE415

Hydraulic Cutter Tool KSG-130 TH



Details

- hydraulic cutter for industrial use
- double-acting hydraulic (no blocking)
- safe and fast cutting of cables, steel tubes etc.
- ergonomic design, easy handling
- blades can be resharpened
- operating with hydraulic drive unit KVDS700 G28 or KCB700

CUTTING CAPACITY MAX. Ø	55 mm (with cable)
BLADE OPENING MAX. Ø	130 mm
WEIGHT	11.8 kg
CUTTING POWER	25 t
OPERATING PRESSURE	700 bar
DIMENSIONS (L X B X H)	670x150x235 mm
MODEL	KSG-130 TH
ART-NO.	CE800
REPLACEM. BLADE	ART-NO. Z3086

Hydraulic Cutter Tool KSG-145 TH



Details

- Hydraulikschere hydraulic cutter for industrial use
- double-acting hydraulic (no blocking)
- safe and fast cutting of cables, steel tubes etc.
- ergonomic design, easy handling
- blades can be resharpened
- operating with hydraulic drive unit KVDS700 G28 or KCB700

CUTTING CAPACITY MAX. Ø	70 mm (with cable)
BLADE OPENING MAX. Ø	145 mm
WEIGHT	18 kg
CUTTING POWER	30 t
OPERATING PRESSURE	700 bar
DIMENSIONS (L X B X H)	780x160x255 mm
MODEL	KSG-145 TH
ART-NO.	CE805
REPLACEM. BLADE	ART-NO. Z3088

Hydraulic Cutter Tool KSG-170 TH



Details

- hydraulic cutter for industrial use
- double-acting hydraulic (no blocking)
- safe and fast cutting of cables, steel tubes etc.
- ergonomic design, easy handling
- blades can be resharpened
- operating with hydraulic drive unit KVDS700 G28 or KCB700

CUTTING CAPACITY MAX. Ø	95 mm (with cable)
BLADE OPENING MAX. Ø	170 mm
WEIGHT	24.2 kg
CUTTING POWER	78 t
OPERATING PRESSURE	700 bar
DIMENSIONS (L X B X H)	810x180x280 mm
MODEL	KSG-170 TH
ART-NO.	CE810
REPLACEM. BLADE	ART-NO. Z3089

Hydraulic Cable Cutter KCG-90 TH



Mechanical control

Details

- very sturdy hydraulic cable cutter for industrial use
- suitable for steel-armored cables
- double-acting hydraulic (no blocking)
- fast and safe cutting
- ergonomic design
- blades can be sharpened
- operating with hydraulic drive unit KCB-700

CUTTING CAPACITY MAX. Ø	90 mm	
WEIGHT	80 kg	
CUTTING POWER	55 t	
OPERATING PRESSURE	700 bar	
DIMENSIONS (L X B X H)	675x200x230mm	
MODEL	KCG-90 TH	
ART-NO.	CE410	
REPLACEM. BLADE	ART-NO.	CE1410 fixed
REPLACEM. BLADE	ART-NO.	CE1411 mobile

Hydraulic Cable Cutter KCG-140 TH



Mechanical control



Electronic control

Details

- very sturdy hydraulic cable cutter for industrial use
- suitable for steel-armored cables
- double-acting hydraulic (no blocking)
- fast and safe cutting
- ergonomic design
- blades can be sharpened
- operating with hydraulic drive unit KCB-700

CUTTING CAPACITY MAX. Ø	140 mm	
WEIGHT	90 kg	
CUTTING POWER	55 t	
OPERATING PRESSURE	700 bar	
DIMENSIONS (L X B X H)	925x210x300mm	
MODEL	KCG-140 TH	
ART-NO.	CE411	
REPLACEM. BLADE	ART-NO.	CE1412 fixed
REPLACEM. BLADE	ART-NO.	CE1413 mobile

Hydraulic Cable Cutter KCG-180 TH



Mechanical control



Electronic control

Details

- very sturdy hydraulic cable cutter for industrial use
- suitable for steel-armored cables
- double-acting hydraulic (no blocking)
- fast and safe cutting
- ergonomic design
- blades can be sharpened
- operating with hydraulic drive unit KCB-700

CUTTING CAPACITY MAX. Ø	180 mm	
WEIGHT	160 kg	
CUTTING POWER	79 t	
OPERATING PRESSURE	700 bar	
DIMENSIONS (L X B X H)	370x400x550mm	
MODEL	KCG-180 TH	
ART-NO.	CE412	
REPLACEM. BLADE	ART-NO.	CE1414 fixed
REPLACEM. BLADE	ART-NO.	CE1415 mobile

KRENN

PRODUCT GROUP 06
HIGHLIGHT

SUSPENSION
SYSTEM
ON BALL BEARINGS



ACCESSORIES



Scan now to go
straight to the
products

Professional KRENN accessories allow you to efficiently and safely handle all our products. From mobile device rests and suspension systems to spring balancers and for operation via foot pedal: our smart solutions ensure your work is effortless and efficient.

Operation via foot pedal



Page 94

Assembly on work bench



Page 94

Mobile device rests



Page 94

Suspension systems



Page 95

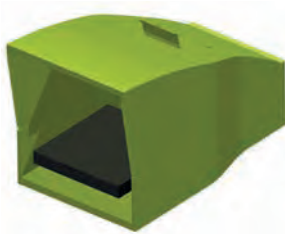
Suspension ring



Page 95

Operation via foot pedal

For fixed set-up at a fixed work station with a mounting clip



About this product

Electro-hydraulic steel cutters without handles and without manual operation – converted with distribution box for operation via foot pedal

Assembly on work bench

For set-up at a mobile work station (workshop trolley) with a mounting clip

About this product

Electro-hydraulic steel cutters without handles and without manual operation – converted with distribution box for operation via foot pedal



Design upon request

Mobile device rests

Tool cart



LOAD-BEARING CAPACITY	300 kg
DIMENSIONS	960 x 510 x 880 mm
ITEM NO.	L1 001

Tool cart with handle



LOAD-BEARING CAPACITY	200 kg
DIMENSIONS	600 x 500 x 755 mm
ITEM NO.	L1 010

Device stand



LOAD-BEARING CAPACITY	150 kg
DIMENSIONS	610 x 410 x 715/1,065 mm
ITEM NO.	L1 020

Suspension system with attachment hook and balancer, cutter head turned by 90°

Attachment hook fixed to the steel cutter

About this product

- Balancer with rotary hook
- easy to adjust
- constant tension
- wire pull-out length: 2.0 m
- load-bearing capacity: 4.5 - 60.0 kg/ depending on design
- weight: 3.2 - 18.4 kg/ depending on design



For optimum weight distribution

Device design with attachment hook depending on model

Suspension system, on ball bearings with balancer

Balancer with rotary hook

About this product

- so you can easily turn the steel cutter
- for positioning at any desired angle
- convenient to use
- steel cutter can be held in any position
- ergonomic/low force needed on the part of the user



Further details

- German patent
- device design with mobile
- suspension system, depending on the model
- optimum weight distribution
- device can turn 360°

Design upon request

Suspension ring for OS-16 C

About this product

- Suspension system fixed to the steel cutter
- for suspension with balancer
- comfortable, ergonomic operation
- flexible handling



Design upon request

MAINTENANCE, REPAIR AND **SPARE PARTS**

For every area of use, KRENN delivers high-quality and durable tools.

So that you too can be prepared for a tough task, we put our products through their paces when we test them here at KRENN. And if they are damaged, we whip them back into shape. Advice, maintenance, repair and replacement parts are all under one roof: at KRENN.

Send your cutter regularly to the KRENN customer service department – this offers affordable protection against the unforesee-

able consequences of damage and makes an essential contribution to compliance with the accident prevention regulations. Benefit from our competent advice, reliable maintenance and repair service and rapid replacement parts supply.

MAINTENANCE, REPAIR AND SPARE PARTS



FAST, RELIABLE, WITH HIGH AVAILABILITY OF REPLACEMENT PARTS

KRENN SUPPLIES TOOLS FOR A **LONG WORKING LIFE**.

SO THAT THEY ARE ALSO READY FOR THE **TOUGHEST WORK**,

THEY ARE PUT THROUGH RIGOROUS **TESTING** AT KRENN –


AND BROUGHT **UP TO SCRATCH** EVEN IF THEY GET **DAMAGED**.

Rapid delivery of replacement parts thanks to extensive stocks – reliable repair and maintenance service

Have your electro-hydraulic or hydraulic KRENN steel cutter checked annually by our experienced service staff and expert team so that we can guarantee the flawless functioning and safety of our high-quality tools.

For our hydraulic material testing presses, our trained team of specialists will be happy to carry out repairs or maintenance on-site in your factory.





Contact us and be impressed
by our customer-orientated,
individual service.



KRENN GmbH & Co. KG
Gutenbergstrasse 17 | 86356 Neusäß
PO Box 12 55 | 86345 Neusäß



Tel.: +49 (0)821 20793-0
Fax: +49 (0)821 20793-30



info@krenn.de



©Copyright 2022
KRENN GmbH & Co. KG

Publisher
KRENN GmbH & Co. KG
Gutenbergstr. 17,
86356 Neusaess,
Germany

Managing directors
Albert Krenn,
Markus Krenn

Content
Markus Krenn
Design and layout
www.creationell.de

Typesetting
CMD Factory GbR

Text
www.creationell.de,
Petra Anne-Marie
Kollmannsberger,

Photos
Werbefotografie Weiß GmbH

KRENN

We specialize in steel cutting

IMPORTANT INFORMATION

The catalogue contains the technical information valid on the date of its publication (the right to make technical alterations is reserved). We reserve the right to charge the prices valid on the day of delivery. All deliveries are made on the basis of our General Terms and Conditions of Delivery and Payment. Imitations and copies of this catalogue may not be made, even in part. We accept no liability for the correctness of the data provided. No liability is accepted for mistakes and typographical errors. Delivery only subject to retention of title.

Published January 2023

KRENN



KRENN GmbH & Co. KG
Gutenbergstrasse 17 | 86356 Neusaess, Germany
PO Box 12 55 | 86356 Neusaess



Tel.: +49 (0)821 20793-0
Fax: +49 (0)821 20793-30



info@krenn.de

